

Make Productive  
Multifunctional Printing  
a Reality in Your Office



Business *can* be simple

Incredible Performance, Best-In-Class  
Productivity & Keep Information Secure

Introducing the Canon imageRUNNER 3245/3235/3225 Advanced Multifunction Systems. A new family of powerhouses represents a true revolution in multifunction productivity that help you do more work and better work than ever before.



The imageRUNNER 3245/3235/3225 systems enhance the way you create, share and distribute documents throughout your organization. User-friendly and designed to maximize productivity, they can complete more jobs in less time than any comparable printer & multifunction printer on the market. A range of management facility ensure cost control and security stay high on your agenda.



#### **Protect Your Assets**

Information is a key business asset and Canon helps you keep it secure. Access to the imageRUNNER is controllable via passwords, your company's network log-in procedure, or even contact-less card. Documents can be held securely in mailboxes, until the relevant user is ready to print them at the device. Documents can also be encrypted before sending to others. For highly sensitive material, a watermark can be embedded into a printed document, becoming prominent when someone attempts to make a copy.



#### **Work Efficiency & Productivity**

The imageRUNNER 3245/3235/3225 systems are powered by Canon's next-generation advanced imageCHIP system architecture for fast multifunction processing and full concurrency. Its Dual system controller design rips through image data at fast speeds for maximum productivity in networked office environment. Vast memory capacities provide the virtual space to support multiple users and workflow in busy departments.

#### **Unparalleled Multifunctionality**

Designed for the results-oriented office, the Canon imageRUNNER handles multiple tasks simultaneously. Whether you need to print, copy, scan, e-mail, or fax, you can always access the function you need—even when other job are running.

#### **Environmental Approach**

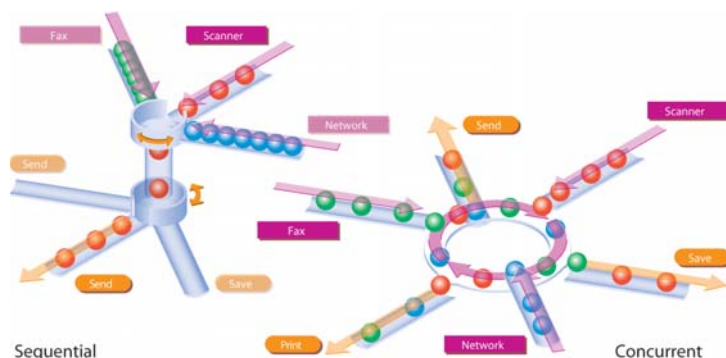
Canon's on-demand fixing technology means that the system automatically enters sleep mode when not in use to save power. It's then ready to use again in seconds when needed for maximum productivity. The device also adheres to the strictest environmental standards such as RoHS, which restricts the use of hazardous substances. The toner "charging process" employed means no ozone is produced — reassuring in today's environmentally conscious businesses.

## Quality And Performance Within Your Budget

Use the multifunction imageRUNNER 3245/3235/3225 to create a highly efficient flow of succinct, informative and impactful communication throughout your business. This Gigabit network device occupies little room but delivers big results.

### Deadline-Beating Performance

In business it's great when you can really depend on someone to get the job done. The imageRUNNER 3245/3235/3225 model are powerful devices ensure that every job is completed quickly with output speeds of up to 45/35/25 pages per minute, respectively. Each model can be configured with optional equipment that allows you to print, fax, scan, and send information easily and quickly, making it ideal for busy departments.



### Superb Quality Prints

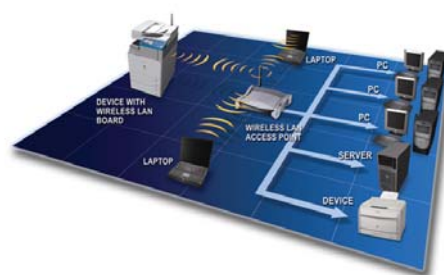
Bring new levels of professionalism to your document communication. Canon's high quality toner ensures a uniform distribution of toner onto every page, with crisp, clear prints at a superb 1,200 dpi. A varied range of accessories allows you to create all manner of output including booklets, stapled reports and hole-punched documents, ultimately saving you time and money.

### Quick And Effective Communication

Each device incorporates Canon's new high-speed colour scanner which allows document scanning at an incredible 51 impressions per minute. imageRUNNER system enables the effective digitization of hardcopy documents in a manner that retains their original characteristics as closely as possible. Once scanned, document can be distributed in various format (PDF, TIFF, JPEG) using Canon's Universal Send to multiple location such as network folders, WebDav, email addresses and mailboxes.

### A Faster Way To Work

The imageRUNNER 3245/3235/3225 systems feature Gigabit (10/100/1000BASE-T) Ethernet network-ready. All these systems automatically switch to the speed of the connected Ethernet network, so installing on your network is a simple task. The Wireless world is easily accommodated by adding optional Wireless network at speeds up to five times faster than conventional Wi-Fi networks.





## The Multifunction System That Does Everything You Need

In business it's great when you can really depend on someone to get the job done. That's the way to think about the imageRUNNER 3245/3235/3225 systems. One powerful, ever-reliable device, it allows you to print, copy, fax, colour scan, and send information easily and quickly, with the quality needed to make your document communication really stand out.



### **Simplicity User Interface & Customizable**

A simple to use interface means sophisticated print jobs can be undertaken from users' desktops. A large colour touch screen makes operation at the device equally simple. Both interfaces are also shared with Canon's Office Colour range so different devices can be used within your office without any retraining. The new Access Management System feature allows you to customizable User Interface of Canon imageRUNNER systems. You now have the power to control what features you make available to your users.

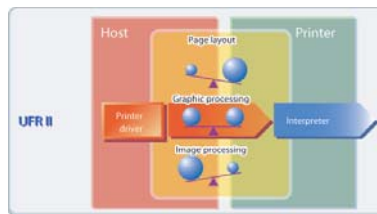
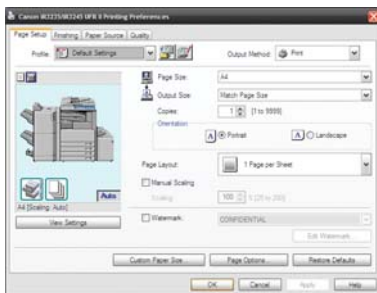
# PRINT



The imageRUNNER 3245/3235/3225 produces quality output at True 1200 x 1200 dpi and is equipped with features to meet all your print requirements.

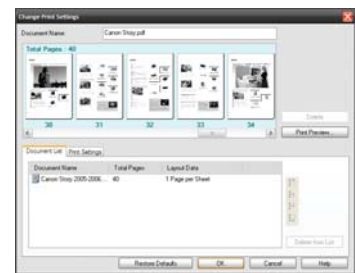
## Print Driver

Printing is carried out using industry standard Post Script, PCL or Canon's unique UFR II for enhanced network processing speeds. Boasting the similar easy to use interface as you'll find on our other office multifunction systems, it will help substantially simplify your print production process. Canon has also equipped this system with extensive advanced features, including the following:



## Edit And Preview

Combine and print documents that were created in different applications as a single document, preview and manipulate the merged file through a thumbnail view, and change settings on-the-fly.



## Store To Mailbox

Send print jobs to personal Mail Boxes for integration with other print or scanned data, creating new compound documents and printed only when required.

## Secure Print

When printing highly confidential documents, Secure Print allows the data to be temporarily stored in the system for printing to begin at the device only upon entry of a confidential PIN.

## Direct USB Memory Printing

Here's real convenience, Direct USB memory printing lets you insert an USB Memory Drive into the front of the machine and get instant prints without having to use a PC. You can print PDF, JPEG or TIFF files with simply just touch it. There's no need to use the printer driver or open an application.

## Data Encryption\*

Data from the print function are encrypted when submitting from your PC. This prevents access and reproduction without authorization.

\*When Encrypted Print Software Kit is installed



# COPY



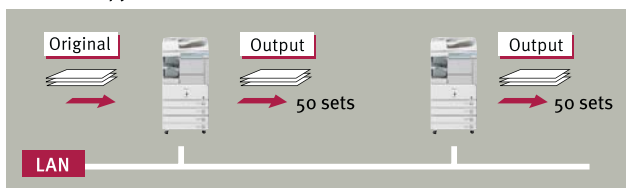
A powerful office copier with a standard Duplexing and packed with rich advance feature set and ability to process multiple job concurrently make it a valuable and productive devices for your users.

## Remote & Cascade Copy

Environments with more than one Canon imageRUNNER 3245/3235/3225 system. If production speed is an issue, you can speed it up significantly by connecting one imageRUNNER system to another on your network. With remote copying, originals scanned by one system can be re-directed automatically to another machine at the point of need on the network. Cascade copying allows two machines to split a job, with simultaneous printing doubling productivity.



Remote Copy



Cascade Copy

## Mailbox

The imageRUNNER 3245/3235/3225 systems incorporate mailboxes for added versatility and confidentiality. Mailboxes act as secure storage at the device for all documents, and can be established for individuals and groups of users. Any document can be scanned, sent to, or printed directly from a mailbox at your convenience – handy if you don't want a confidential report lying around before you have a chance to retrieve it. You can also preview documents in your mailbox at the device before printing.

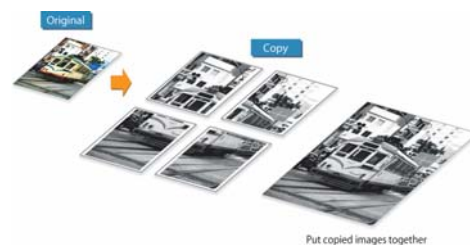


## Job Block Combination

Rushing with scan and reproduce multiple batches of originals with different setting? With the new Job Block Combination copy feature, you can scan multiple batches of originals with different copy setting and print them as one document. This can help create an efficient print process where the time to manually sort through and combine documents is eliminated, leading to better office productivity and management of print output.

## Poster Creation

Create beautiful posters of any size. Poster sizes copies of an image can be achieved by copying sections of the image onto multiple sheets which are assembled as a large poster.



## Covers and Separators

Creating handouts and manuals was never so easy. Now you can copy a large document and include a cover printed and/or separators on different paper into pre-defined sections removing the need for manual intervention and collation at a later stage.

## Additional Copy Features

A wide range of image and document manipulation capabilities available include:

- Job Build
- Booklet Creation
- Job Done Notice
- Transparency Interleaving
- Image Combination
- Image Creation
- Margin Shift
- Frame Erase
- Form Composition
- Page/Copy Set Numbering
- Watermark/Print Date

# SCAN & SEND



What makes the innovative imageRUNNER systems truly unique is a range of intelligent, networked features that are ready to revolutionize the way you work. You benefit from a highly effective central communication hub - that combines scan, print, copy and distribution functions, working together concurrently.

## Powerful Colour Scanning

With multiple business applications come varying degrees of scanning requirements. The new high speed color image reader and document feeder enables high speed color and monochrome scanning of 51 impressions per minute. What's more, by incorporating the high capacity tray, up to 100 sheets of paper can be loaded.



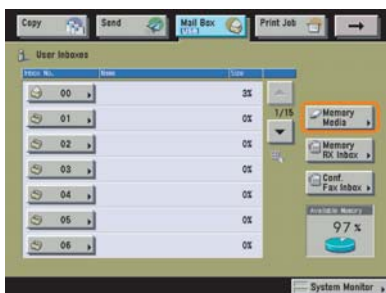
## Universal Send™

Scanning the document and converting hardcopy originals into electronic form is now as easy as copying. Scanned documents can be converted into formats like PDF, TIFF, and JPEG and distribute to multiple destination, including E-mail/Internet Fax address, saved into desktop PC, Server, mailboxes for sharing. To convert hardcopy originals into electronic, all you have to do is connect to the office network system. Specific server system becomes unnecessary and without the need for additional software.



## eCopy Make Electronic Document Distribution Easier Than Ever

Simply add eCopy to your Canon system you can transform paper documents into information securely and seamlessly into business applications and document management applications that support electronic business processes. Its offers native integration to leading document management, e-mail, fax, database, collaboration, and cost recovery software applications for low-cost, easy, instantaneous distribution and management of electronic copies of paper documents.



## Direct Scan-to-USB memory

The imageRUNNER 3245/3235/3225 offers a whole new level of convenience with Direct Scan-to-USB memory – an indispensable function for users who are in hurry or who want quick paper conversion to electronic files without a PC. You can convert paper document into PDF, JPEG, or TIFF files and saved directly into USB memory media with simply just touch it.



## Improve Document Workflow With iW360

Everything you need for a better workflow, from capture and storage to document creation and distribution, iW360 software gives you all the tools you need to make work easier than ever before.



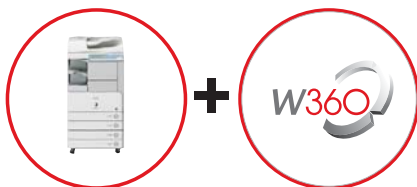
### What is iW360 software?

iW360 software is ideally suited to any business or organization that needs to streamline its office working practices. And its uses are numerous too. From creating documents for presentation to collating proofs of purchase, from producing travel itineraries to updating product manuals, iW360 software enables you to produce professional documents and manage a multitude of data in minutes. And in the end, you've got the job done, smarter.

iW360 integrates seven of Canon's leading applications into a total solution which can help increase productivity in almost any office environment. iW360, only available from Canon, combines the following:

**iW Function Flow.** This brand-new capability offers pre-registered buttons and personalized functionality that enable quick workflows from scanned documents. Imagine this: You've completed a document. Now you need to generate six hard copies and send ten electronic files to different people. One press of a button and the job's complete.

**Compact PDF** lets you reduce the size of scanned documents. Imagine this: Compact PDF shrinks even the largest file, making it quicker to send and less likely to be stopped by an external firewall. In addition, if you're sending the PDF to a number of recipients, sending a Compact PDF helps keep the traffic on your network to a minimum.



### File Size Comparison

Original: A4-Sized Hard Copy (Colour Graphics with Text)



Canon's PDF (Compact)  
300-dpi Colour Scan  
File Size: **150 KB**



PDF File Format  
300-dpi Colour Scan  
File Size: **2 MB**



PDF File Format  
300-dpi B/W Scan  
File Size: **390 KB**

**Searchable PDF** lets you search the content of scanned and distributed documents. Imagine this: There's a reference somewhere in a set of PDFs that you need to find in a hurry. The problem is that they're long, and the key phrase appears just once. With Searchable PDF, you can find it in moments.

# Network Device Management

Scalability. Reliability.

Real-time Communications.

Productivity. Network efficiency.

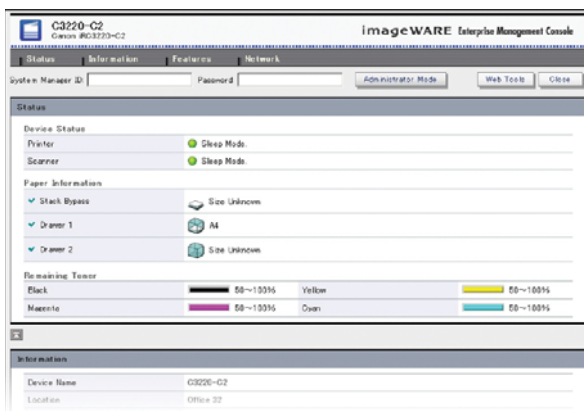
## Always-Efficient

Using Canon's optional unique e-Maintenance system, automatically report any problem to service centres, so you don't need to worry about constant monitoring, whilst simultaneously reducing administration burden, increasing up-time for your multifunction systems, and helping you to optimize the productivity of your Canon multifunction system.



## Effortless IT Management

Canon's iR3245/3235/3225 is "network-ready", and installation on your network is a simple task. Incorporating Canon's iW Management Console (iWMC) is a web-based utility that facilitates centralized management of networked devices — ideal for busy IT departments. This standard feature enables remote management of device settings, discovery of new devices using automated tasks, and device error notifications via email so they can be dealt with easily and quickly, ensuring minimal downtime.



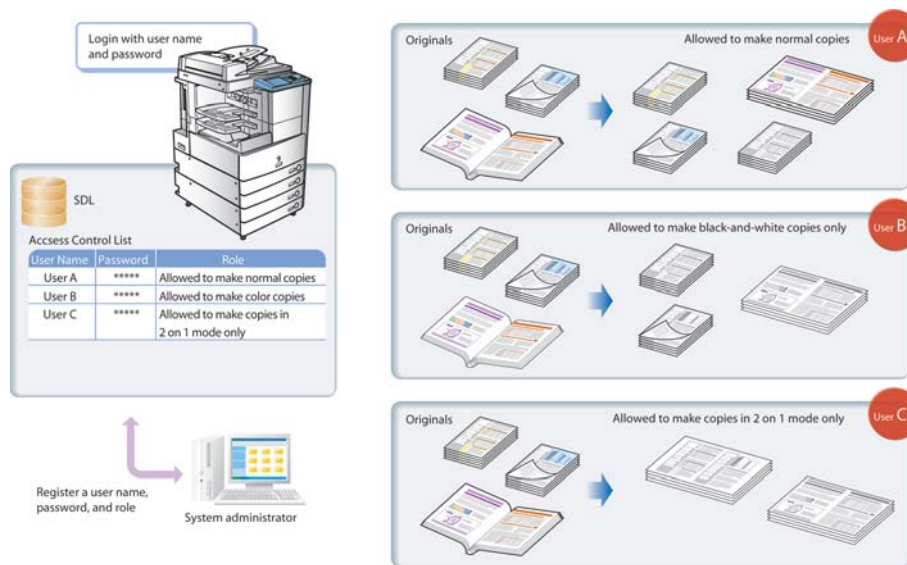
**Trace & Smooth PDF** lets you convert text in PDF files to outlines for sharper edges and increased readability. The outline data can also be manipulated in Adobe Illustrator® to create elements for other documents.



## Cost Effective, Controllable Printing

Using both sides of paper is not only cost-effective, it adds a professional touch to your business communication. A number of powerful tools exist which allow you to keep a tight reign on your costs. Canon's optional iWAM MEAP software is a management tool that allows you to easily determine who is printing what, where and how much it's costing you. This makes budgeting easier and helps you to realize a clear return on your investment.

The new Access Management System (AMS) feature allows you to set specific profiles for individuals or departments. For example, certain departments or individual can be restricted to only copy and print, while others can scan & send documents. This helps you to manage resources in line with business needs and keep costs to a minimum.



## Flexible, Open Architecture

The imageRUNNER 3245/3235/3225 systems incorporate Canon's MEAP™ (Multifunctional Embedded Application Platform). This is an in-built Java-based platform that allows for easy integration with third-party software solution. In fact, Canon partnered with leading software developers who provide innovative, customized solution that extend the power and value of your system.

## Making Deployment Simple For Users

An identical user interface is shared across each device and also with Canon's office colour devices and other black and white multifunctional systems. This makes multiple device deployments throughout your company quick to administer and enables users to effortlessly switch between one device and another.

## Protect Your Business

Choosing Canon multifunctional systems means that your business can be more efficient and more productive. But all multifunctional devices present potential security risks. Fortunately, at Canon we can provide robust security solutions.

### Securing Your Device

In the past, the only way of maintaining document security in an office was to have a personal printer on every desk. Now, we have solutions that can let users print to a multifunctional device and still maintain document security. We can go further – and ensure that only authorised people can make prints, copies, faxes and scans. Our secure print and document release solutions guard against the risk of interception by holding back print jobs until authorised users are ready to collect them. They are designed to work in the modern flexible office – even when users are not at their desk.

### Securely Distributing Your Documents

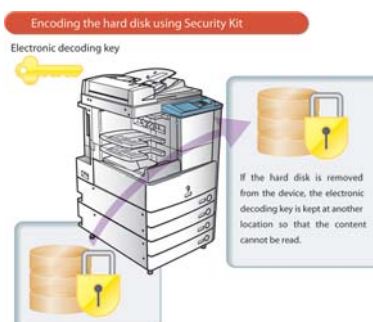
Multifunctional devices do far more than just print and copy. They are also advanced network scanners. Unauthorised users can use them to email data out of your offices. We can provide encrypted PDF and print to let you restrict who can access particular documents. You can restrict access to sensitive material. You can control who can open, view, print, copy, scan or fax a particular document, ensuring that your most sensitive information enjoys the highest levels of protection, while all staff can access the documents they need.

Our secure distribution solutions, with secure watermarks and digital user signatures, let you track who has sent, printed and scanned each document. Users have to identify themselves before they can send an email, thereby eliminating unauthorised use.



### Securing Your Printer's Hard Disk

Canon's security solutions eliminate the risk of unauthorised access to stored data in three ways. It applies powerful 128-bit encryption to data that is written to the device's hard drive or RAM prior to print, so nobody can view or re-use it. It also allows data to be erased from the hard disk/RAM after a job has been completed. It completely conceals the list of jobs processed by the device from everyone except the system administrator.



### Securing Your Device's Network

These include powerful 128-bit encryption, which ensures documents are unintelligible if they are intercepted and IP address access control and MAC address filtering to ensure that access can be restricted to the users you specify. With HTTPS, we can provide secure data transfer, ensuring that your data cannot be intercepted, wherever in the world your network reaches.

### Common Criteria

The iR3245, 3235, and 3225 (along with the HDD Data Encryption Kit) also qualify for EAL3 status under the Common Criteria Program (ISO15408): the global standard for IT security evaluations requirements and establishes procedures for evaluating IT security.

## Specifications imageRUNNER 3245/3235/3225

Main Unit			
	iR3245	iR3235	iR3225
A4 Monochrome	45 ppm	35 ppm	25 ppm
Memory	Controller 1: 512MB / 1024MB (Max) Controller 2: 256MB / 768MB (Max)		
Hard Disk	60GB		
Interface	Standard: 10/100/1000Base-T, USB 2.0		
Network Printing*			
Printer Languages	UFR II, PCL6, PCL5e, PostScript 3		
Resolution	1,200 x 1,200 dpi		
Operating Systems	Windows® 2000/XP/Server 2003/Vista/ Win7/Macintosh® OSX 10.2.8 or later		
Protocols	TCP/IP (LPD/Port9100/IPP/IPPS/SMB/ FTP), IPX/SPX (NDS, Bindery), AppleTalk		
Pull Scan	Colour Network TWAIN Driver		
Copying			
	iR3245	iR3235	iR3225
FCOT	3.9sec	3.9sec	4.9sec
Concurrency	Yes		
Resolution	1200 equivalent x 600 dpi		
Reduction / Enlargement	25 to 400%		
Maximum Set Quantity	999		
Internal Copy Control	Standard		
Colour Universal Send Kit-P1			
Scanning Speed	A4 51ipm 300dpi (Colour/B&W) with DADF		
Resolution	100 to 600 dpi		
Maximum Scan Area	A3		
Scan Destinations	E-mail/Internet FAX (SMT), PC (SMB, FTP, NCP), iWDM (FTP), WebDAV		
File Format	TIFF, PDF, JPEG		
Address book	LDAP, Local (Max. 1800)		
Universal Send PDF Advanced Feature Set			
Format	PDF – High Compression PDF, Search- able PDF (OCR), Scalable PDF (Trace and Smooth)		
Universal Send PDF Security Feature Set			
Format	PDF – Encrypted PDF, PDF with device signature		
Facsimile			
Transmission Time	Less than 3 seconds per page		
Multiple Line	Maximum 3 lines		
Address book	LDAP, Local (Max. 1800)		
Max. Sending Document Size	A3		

DADF-U1	
Capacity	100 Sheets
Paper Sizes	A5 to A3
Paper Weights	42 to 128gsm
Document Scanning Speed	51ipm
Standard Cassette	
Capacity	550 sheets x 2 cassettes
Paper Sizes	A5 to A3
Paper Weights	64 to 90gsm
Bypass Tray	
Capacity	50 Sheets
Paper Sizes	A5 to A3
Paper Weights	64 to 128gsm
Cassette Feeding Unit-Y3	
Capacity	550 sheets x 2 cassettes
Paper Sizes	A5 to A3
Paper Weights	64 to 90gsm
Paper Deck-Q1	
Capacity	2,700 sheets
Paper Sizes	A4
Paper Weights	64 to 105gsm
Finisher-S1	
Stapler Paper Sizes	A5 to A3
Stapler Positions	Corner
Stapler Capacity	50 sheets
Finisher-AE1	
Stapler Paper Sizes	A5 to A3
Stapler Positions	Corner, Double
Stapler Capacity	50 sheets
Saddle Finisher-AE2	
Stapler Paper Sizes	A5 to A3
Stapler Positions	Corner, Double, Saddle-Stitch
Stapler Capacity	Corner/Double: 50 sheets Saddle Stitch: 15 sheets
Folding	V-Fold
Hole Puncher	
Puncher Paper Sizes	B5 to A3
Number of Holes	2 hole
General	
Power Consumption	Sleep Mode: 1.5w Running: Less than 1.35k Watts
Warm Up	35 seconds or less
Dimensions	565 (W) x 700 (D) x 761 (H)
Weight	74kg

\* Optional Function

## Next-Generation Features For Professional-Standard Results

The range of finishing options on the imageRUNNER 3245/3235/3225 systems mean you can produce professional documents quickly and easily without the hassle and expense of outsourcing.

From simple documents to professional finishing

Making your documents look like the real deal is easy with the imageRUNNER 3245/3235/3225 systems.

### 1 Saddle Finisher AE2\*

With no more than a few simple mouse clicks, and the Saddle Finisher AE2, you can produce automatically folded booklets – even up to A4 in size. Buffer Pass Unit E2 is required.

### 2 Hole Puncher Unit\*

Increase productivity by adding hole punch capability to the functionality of the finisher.

### 3 Finisher AE1\*

For extra copies or heavier workloads, the Finisher AE1 is ideal with its two trays and a 2,000 sheet capacity. It also accommodates 50 sheet stapling for sturdier report production. Buffer Pass Unit E2 is required.

### 4 DADF U1\*

A 100 sheet document feeder (DADF) helps cope with scanning and sizeable copy runs, accommodating document with different sized pages.

### 5 Internal Finisher S1\*

Transform a simple report into a fully stapled document with the optional internal Finisher S1. Staple capacity is 50 sheets of A4, with a capacity of 500 A4 – A5R in a single print run.



## 6 Advanced Technology

Using the Multifunctional Embedded Application Platform (MEAP), Canon's Java based application platform, enables new and customized software to be incorporated directly within your device. This way you can future proof your investment. Plus, the device also adheres to the strictest environmental standards such as RoHS, which restricts the use of hazardous substances.

## 7 Paper Cassette

Two cassettes are equipped as standard. Each of the 550 sheet cassettes are user-adjustable to cope with paper sizes between A5-A3.

## 8 Cassette Feeding Unit Y3\* 10 Side Paper Deck Q1\*

A total of 4,950 sheets gives huge versatility from 6 different sources, including optional additional trays and 2,700 sheet paper deck and you have a comprehensive paper supply equipped for the most demanding workloads.

## 9 Stack Bypass

The 50 sheet stack bypass accommodates a variety of media up to 128gsm.

## Load-while-operating Toner Replacement

With a reserve toner tank and a dedicated door, toner replacement can be done without stopping or interrupting the job.



\*Optional

## SOUTH & SOUTHEAST ASIA REGIONAL HEADQUARTERS

CANON SINGAPORE PTE. LTD.

1 HarbourFront Avenue #04-01, Keppel Bay Tower, Singapore 098632  
Tel: 65-6799 8888 Fax: 65-6799 8882

www.canon-asia.com  
www.canon.com.sg

## CANON SALES SUBSIDIARIES & BUSINESS PARTNERS

### Afghanistan:

Megaplus Afghanistan Limited  
House No. 233, Street No. 4, Charagh Ali,  
Qilla-e-Fatehullah, Kabul, Afghanistan  
Tel: 93-700 228 832 / 93-700 979 511  
Fax: 93-202 201 259  
Email: info@megaplus.com.af

### Bangladesh:

Flora Limited  
Adamjee Court Annex-2 (4<sup>th</sup> Floor)  
119-120 Motijheel Commercial Area  
Dhaka 1000 Bangladesh  
Tel: 880-2-716-2742-46 / 225  
Fax: 880-2-955-0030  
www.floralimited.com

### Brunei:

Interhouse Company  
No. 5-7 Bunut Jaya Complex  
Spq 574 Jalan Tutong BF1320  
P.O. Box 423, Seri Complex  
Bandar Seri Begawan BA 1779  
Brunei Darussalam  
Tel: 673-2-653-001  
Fax: 673-2-653-003

### Cambodia:

Royal Cambodia Co., Ltd  
#437 Preah Monivong Blvd  
Phnom Penh  
Kingdom of Cambodia  
Tel: 855-23-428955  
Fax: 855-23-722961

### Hong Kong:

Canon Hongkong Co. Ltd  
19F, The Metropolis Tower  
10 Metropolis Drive  
Hungghom, Hong Kong  
Tel: 852-3191-2388  
Fax: 852-2369-3800  
www.canon.com.hk

### India:

Canon India Private Limited  
7<sup>th</sup> Floor, Tower B, Building #5  
DLF Cyber Terraces, DLF Phase-3  
Gurgaon - 122002  
Haryana, India  
Tel: 91-124-416 0000  
Fax: 91-124-416 0011  
www.canon.co.in

### Indonesia:

PT Samafitro  
Jalan Ir. H Juanda No.8  
Jakarta 10120, Indonesia  
Tel: 62-21-345 8989  
Fax: 62-21-345 6699  
www.samafitro.co.id

### Malaysia:

Canon Marketing (Malaysia) Sdn Bhd  
Block D, Peremba Square  
Saujana Resort Section U2,  
40150 Shah Alam  
Selangor Darul Ehsan, Malaysia  
Tel: 60-3-7844 6000 / 7845 0055  
Fax: 60-3-7844 6196 / 6198  
www.canon.com.my

### Maldives:

Simdi Company Pvt Ltd.  
G. Manaam Building,  
2/1 Neeloafaru Magu,  
Male' 20-129, Maldives  
Tel: 960-333 4421  
Fax: 960-333 4424

### Myanmar:

Myanmar Golden Rock International Co., Ltd  
Level 6, FJV Commercial Centre  
No: 422-426, Strand Road  
Botataung Township  
Yangon, Myanmar  
Tel: 95-1-202092 to 96  
Fax: 95-1-202079  
Email: sales@mgr.com.mm

### Nepal:

International Electronics Concern (P) Ltd  
Kha 14, 1<sup>st</sup> Floor  
Haratibhawan Putalisadak  
Ramshah Path, Kathmandu, Nepal  
P.O. Box 12588  
Tel: 977-1-442 1991  
Fax: 977-1-442 1909

### Pakistan:

Shirazi Trading Company (Pvt.) Ltd  
8<sup>th</sup> Floor, Adamjee House  
I.I. Chundrigar Road  
Karachi 74000 Pakistan  
Tel: 92-21-3241 (7659), (7737) or (7746)  
Fax: 92-21-(3241 7747), (3242 0417) or  
(3242 0418)  
www.shirazitradng.com.pk

### Philippines:

Canon Marketing (Philippines), Inc.  
Ground Floor Commerce and Industry Plaza.  
Campus Ave. Cor. Park Ave., McKinley Hill  
Fort Bonifacio, Taguig City  
Tel: 632-884-9000  
Fax: 632-556-1456  
www.canon.com.ph

### Sri Lanka:

Metropolitan Office (Pvt) Ltd  
12, Magazine Road Colombo o8  
Sri Lanka  
Tel: 94-11-470 0200  
Fax: 94-11-470 0267

### Thailand:

Canon Marketing (Thailand) Co. Ltd  
10<sup>th</sup> Floor Bangkok City Tower  
179/34-45 South Sathorn Road  
Bangkok 10120  
Tel: 66-2-344 9999  
Fax: 66-2-344 9960  
www.canon.co.th

### Vietnam:

Canon Singapore Pte Ltd  
Ho Chi Minh City Representative Office  
Floor 6, Saigon Centre Building  
65 Le Loi, Ben Nghe Ward, District 1  
Ho Chi Minh City, Vietnam  
Tel: 848-3820 0466  
Fax: 848-3820 0477

Canon Singapore Pte Ltd  
Hanoi Representative Office  
CharmVit Building, 11<sup>th</sup> Floor  
117 Tran Duy Hung, Cau Giay District  
Hanoi, Vietnam  
Tel: 844-3771 1677  
Fax: 844-3771 1678  
www.canon.com.vn



**The Copier**  
MALAYSIA SDN BHD  
YOUR BUSINESS PARTNER  
03 6140 4688 / 6141 4688  
Hotline: 1700 81 4588  
www.thecopier.com.my

*This document is for information purpose only. The contents are subject to change without notice. Product options, name and availability may vary by regions. We expressly disclaim any liability or contractual obligations with respect to this document.*

*Canon, imageRUNNER, imageRUNNER ADVANCE, imageCHIP, RAPID Fusing System, MEAP, eMaintenance, Business can be simple and get Smart get genuine are trademarks of Canon Inc. and/or its affiliates. Other names may be the trademarks of their respective owners.*

*uniFLOW is an independent party software distributed by Canon Singapore Pte. Ltd.*

0123W475 © 2011 Canon Singapore Pte. Ltd.  
All rights reserved. Printed in Singapore.