



Advanced made simple for you.

imageRUNNER
ADVANCE



Canon's imageRUNNER ADVANCE: SIMPLY ADVANCED.

At Canon, we know that technology should progress with your business – not complicate it. Business can indeed be simple. Instead of remembering steps, you can focus on your task at hand. Rather than worrying about print settings, you can prepare for that all-important meeting. This is true efficiency that goes beyond technical specifications.

We believe that a multifunctional printer should be built to meet your unique business needs, and yet integrate smoothly with your workflow. It is with this philosophy in mind that Canon's finest engineers designed the next generation of imageRUNNERS.

Now empowered with the latest Cloud technology, the imageRUNNER ADVANCE multifunctional device sets a new standard in scalability, flexibility and productivity while retaining our trademark simplicity.

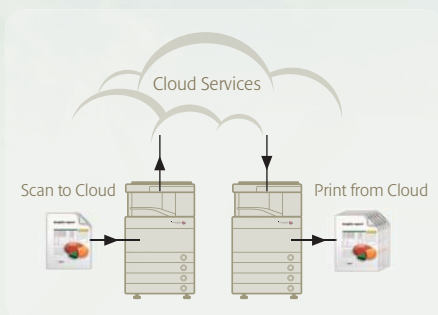


imageRUNNER ADVANCE TECHNOLOGY REACHES NEW HEIGHTS

Cloud computing is gaining acceptance with more and more companies across the globe. Businesses today look to Cloud computing for on-demand scalability. Costly infrastructure, setups and administrative burden are a thing of the past with proper implementation of Cloud Computing technology.

Canon's imageRUNNER ADVANCE maximizes office productivity by allowing users to access Cloud services right from imageRUNNER ADVANCE devices. Users can scan and store their paper documents, or choose to retrieve and print their documents stored in their Cloud service.

Scan-to-Cloud and Print-from-Cloud is simple with Canon's imageRUNNER ADVANCE - all that is needed is an imageRUNNER ADVANCE multifunctional device (MFD); no drivers, additional software or personal computers are required. With the Cloud Scan and Cloud Print support of Google™ Docs and Microsoft™ SharePoint Online, imageRUNNER ADVANCE systems are the perfect way to scan and print through Cloud services.



Important Note:

- * Machine upgrades may be required to support Google™ Docs and Microsoft™ SharePoint Online Cloud services via the imageRUNNER ADVANCE devices. Internet connectivity is required.
- ** Users of Google™ Docs and Microsoft™ SharePoint Online Cloud services are advised to evaluate the benefits and risks of Cloud services and their data security needs.
- *** Availability of the Google™ Docs and Microsoft™ SharePoint Online Cloud services on the imageRUNNER ADVANCE devices varies by country or region. For more information, please contact your local Canon Sales Office.

Find out what makes the C7055 / C9065 PRO / C9075 PRO
Canon's most ADVANCED multifunctional device to date.



DELIVER FASTER

In the world of business, speed is of essence. That's why you need an imageRUNNER ADVANCE.

Designed for Speed

Canon's new Advanced imageCHIP system architecture is built with efficiency and speed in mind, so you can best meet today's high volume, high quality work demands.

Experience print speeds of up to 75 pages per minute in black and white, and 70 pages per minute in full color with the C9075 PRO. With the Single-Pass Duplex Color Scanner, you can convert digital files at an impressive speed of 200/140 impressions (B&W/color) per minute at 300dpi.



Maximum Uptime

The new imageRUNNER ADVANCE features on-the-fly toner replacement so you can print even while changing toners. A larger paper capacity and the ability to perform eMaintenance monitoring enables even quicker job turnarounds.

Individual Customization

Complex, frequently used settings can be easily configured as shortcuts in the Quick Menu. You can even personalize the workflow at group or personal level for maximum efficiency.



Direct Print and Scan

With an in-built USB port, you can now print directly from your thumbdrive or even scan documents directly into it. Optional connectivity options let you expand this convenience to Secure Digital and CompactFlash cards.

WORK SAFER

Enjoy peace of mind with Canon's innovative approach to document security.



HDD Encryption and Erase

Encrypt your mission-sensitive data before it is even written to the hard disk drive in the imageRUNNER ADVANCE. Once jobs are complete, data is automatically overwritten. For added security, you can opt for a removable hard disk drive that can be placed in a secure location when not in use.



Document Scan Lock

Embed hidden tracking information in a document to restrict unauthorized copying or scanning, and also to track the origin.



Secure Print via Card Authentication

You can control print output, and ensure that only the person who printed them can collect the printouts. All without disrupting your company's workflow.



Adobe® LiveCycle Rights Management

Administrators can now set automatic document privileges for PDF documents scanned at the device, through integration with the Adobe LiveCycle® ES Server. Accessing a Policy Protected PDF will trigger an authentication process with the Rights Management Server, ensuring that only the latest security policies and authorized users list are used.

Compliance with iEEE2600 Standard

The iR-ADV C7000/C9000 PRO series meets the iEEE2600 Standards for hardcopy security, which is now an established requirement for medical, finance, and other office environments.

ADOBE® LIVECYCLE® RIGHTS MANAGEMENT ES

RUN SMOOTHER

Our idea of a smoother workflow: Higher productivity with greater simplicity.

Advanced Box

Canon's new built-in document sharing solution simply makes sense. Multiple users can collaborate easily on a shared folder and access files from PCs or other networked imageRUNNER ADVANCE systems. Personal folders are also available for more sensitive documents. What's more, you can also preview the documents before printing them.



Scan and Send

In one simple operation, you can distribute scanned documents through email, fax or network folders. Enjoy greater possibilities than ever with the following.



Expanded PDF Capabilities

Choose from standard High Compression PDF, Searchable PDF, Encrypted PDF and even the inherent Adobe PDF Reader Extensions. Enjoy functionality such as attachments, electronic share and review, and sticky notes with Adobe Acrobat Reader.

Fax & Remote Fax

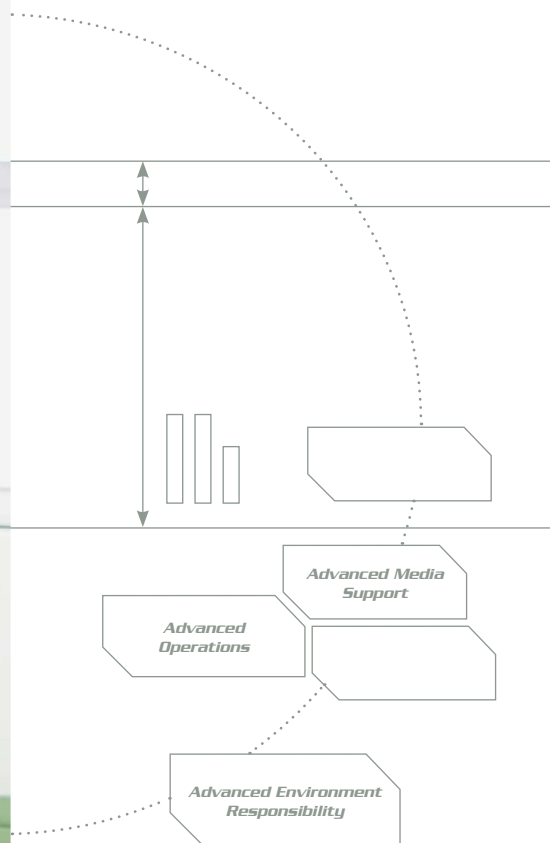
The cost-saving Remote Fax Kit allows you to fax from non-fax board imageRUNNER ADVANCE systems through a fax-board installed one. With the optional Super G3 fax options, the fax-enabled system provides 4 lines of fax connectivity to help you handle large volume faxing and keep work flowing.

By consolidating multiple standalone fax devices into a single imageRUNNER ADVANCE, you'll save even more cost and space.

Office Open XML Format

Adopting the latest Office Open XML file formats, contents inside your scanned documents can now be easily accessed and used by other applications and business systems.





MEAP Connectors

MEAP Connectors provide the foundation and common interface to work with external systems (such as Microsoft Office SharePoint). A MEAP Software Development Kit (SDK) is also available to help third party vendors in developing proprietary, customized systems.

Access Management

System administrators can restrict various features of copy, print, fax, scan, and Mail Box by user, group or job function. You can even limit access for very specific functions, such as Color Copying.

LOOK BETTER

Professional, vibrant documents with impressive finishing - a professional print facility right at the heart of your office.



Enhanced Image Quality

Canon's next generation imaging systems deliver stunning image quality with astonishing speed. True 1200 x 1200 dpi printing resolution produces crisp text with smooth corners, while subtle gradient transitions give images remarkable clarity. Genuine Adobe PostScript 3 capability ensures full font compatibility and quality, with support for Pantone Color System, which is essential in the creative and publishing industries.

Precise eight-beam red lasers have a small diameter to produce high-quality images with proper shading and accurate registration. With Auto Gradation Adjustment, densities and halftones are adjusted to their ideal level. Real-Time Calibration helps maintain this level by making automatic, real-time adjustments during print runs.

Together with Canon's new oil-free and micro-dispersed wax based pQ toner and new image controller; the result is sharp, vivid, dense images, improved gloss levels, and a smooth finish.

Impressive Finishing Options

Canon's optional accessories provide you the option to create in-house professional looking reports, presentations or manuals. Select from a wide range of finishing options for stapling, punching, collating, V-folding and even booklet making and paper weights, as well as paper types like coated, matte or specialty to give your documents the professional, polished edge.

Generous paper capacity of up to 9,300 sheets (C9065 PRO & C9075 PRO) is also available to ensure that high volume/page count jobs can run continuously.



Sophisticated Color Management

Where an exceptionally high level of productivity and advanced color management control is needed, you can rely on our Fiery print controller options - imagePASS-A1 and ColorPASS-GX300. Utilizing the EFI® ColorWise tools, consistent delivery of the most precise, accurate colors can be achieved. The optional Graphic Arts Feature Set (available only for ColorPASS) provides added benefits such as color matching, halftone screening, and paper simulation.

GO GREENER

Greater print productivity with a smaller environmental footprint.



Eco-friendly Design

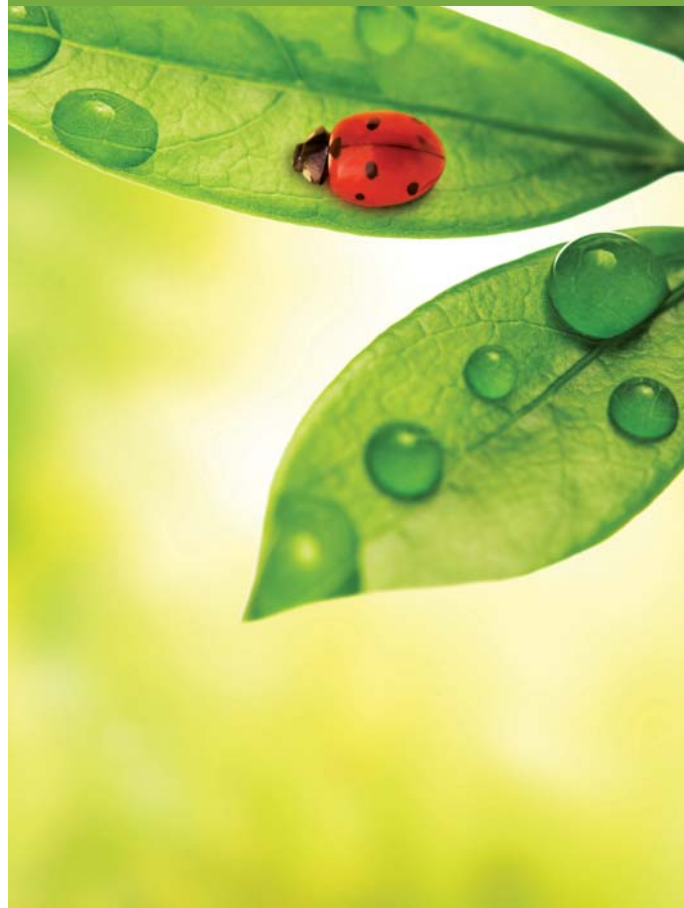
Canon makes a difference through creative ecological thinking. The imageRUNNER ADVANCE models employ certain components fabricated with 100% recycled plastic from retired products. Canon's innovative green technologies also include bio-based plastic, a plant-derived compound that replaces certain petroleum-based plastic parts.



Greater Energy Efficiency

Canon's fusing technologies and new pQ toner helps to reduce overall energy consumption by minimizing heat and power requirements. The new duplex color image reader for imageRUNNER ADVANCE also use less energy than ever when capturing superb-quality images at impressive speeds. The new Induction Heating Fusing System reduces power use in digital multifunctional systems by up to 30% over previous models*. In Sleep Mode, power consumption is at a low 1.5W, or less. Even when a USB card reader is installed, the machine is also able to go to deep sleep to save energy.

** when compared against imageRUNNER COLOR 5185*



Greener Way to Work

The imageRUNNER ADVANCE delivers a greener, smoother workflow. Organizations across the globe can seamlessly share and distribute digital documents. And because you can preview the files prior to printing, changes can be made before committing toner to paper to minimize print errors. Administrator can even encourage duplex printing to help reduce waste and save paper, as well as optimize color usage throughout the enterprise via solutions available from Canon.

CO₂ Emissions Reduction

Through Life Cycle Assessment (LCA) System, Canon has reduced CO₂ emission by more than 30% over previous models. Each stage of the product life cycle, including manufacturing, energy use, and logistics, are scrutinized and improved. Each product and component is designed to be compact, with less packaging to make transportation more efficient.

SIMPLY SMARTER

The new imageRUNNER ADVANCE is a multifunctional machine created to meet the document communication demands of today — and tomorrow.

With its impressive print speeds and professional grade print quality, the new imageRUNNER ADVANCE is perfect for companies needing on-demand, short-run volume, production-quality output with a quick turnaround. In short, it is built around your business, for your business.



To make simplicity work for you, the imageRUNNER ADVANCE is powered by some of the most advanced technologies and innovations available in the market today. And because every business has its unique challenges, we offer an entire range of accessories to suit your needs.

Whether you require in-house professional production capabilities, high-speed, high-volume prints, or simply a multifunctional system that enhances your infrastructure seamlessly - there is an imageRUNNER ADVANCE just for you.

SPECIFICATIONS imageRUNNER ADVANCE C7000/9000 PRO Series

Type	Console	
Maximum Original Size	A3	
Copy Sizes	Cassette1,2	A4
	Cassette3,4	A5R-SRA3 (320 x 450mm), (330 x 483mm)
	Stack Bypass	A5R-SRA3 (320 x 450mm), (330 x 483mm) Custom Size, 100 x 148mm to 330.2 x 487.7mm Optional Envelope Feeder, COM10 No.10, Monarch, DL, ISO-B5, ISO-C5
Resolution	Reading	600dpi x 600dpi
	Copying	600dpi x 600dpi
	Printing	1200dpi x 1200dpi (text/line only) 256 Gradations
Copy/Print Speed	A4 (80 gsm)	C9075 PRO: 75ppm (B&W) & 70ppm (Color) C9065 PRO: 65ppm (B&W/Color) C7055: 55ppm (B&W/Color)
	Magnification	Zoom 25-400%
	First Copy Time	Black-and-White C9075 PRO: 4.4sec, C9065 PRO: 4.9sec, C7055: 4.9sec Full Color C9075 PRO: 6.0sec, C9065 PRO: 6.6sec, C7055: 6.6sec
Warm-Up Time	C9075 PRO: 6 minutes C9065 PRO: 5 minutes, C7055: 5 minutes	
Multiple Copies/ Prints Duplexing	1 to 9999 sheets	
Paper Weight	Cassette	52 to 220gsm
	Stack Bypass	52 to 300gsm
	Duplex	52 to 220gsm
Paper Capacity	Standard	1,100 sheets x2 cassettes (80gsm) 550 sheets x2 cassettes (80gsm) Stack Bypass: 100 sheets (80gsm)
	Paper Deck	3,500 sheets, Multi-drawer Paper deck: 6,000 sheets
	Total Capacity	6,900 sheets, Multi-drawer Paper deck: 9,400 sheets
CPU	Canon Custom Processor, 1.2GHz	
Memory	Standard: 2GB RAM Maximum: 2.5GB RAM	
Hard Disk Drive	Standard 80GB (Available Disk Space: 10GB) Maximum 1TB (Available Disk Space: 675GB)	
Interface	Ethernet (1000Base-T/100Base-TX/10Base-T), Wireless LAN (IEEE802.11b/g, Optional), USB2.0	
Power Supply	220-240V AC, 50/60Hz	
Power Consumption	3kW max. (C9075 PRO & C9065 PRO), 2kW max. (C7055)	
Dimensions (WxDxH)	1180 x 932 x 1403mm (with 1PDS, Upright Control panel, C9075 PRO & C9065 PRO)	
Weight	Approx. 288 kg (with 1PDS & Upright Control Panel) Approx. 282 kg (with 1PDS, C7055)	
Print Specification		
PDL	UFR II (Standard), PCL 5c/6 (Optional), Adobe PostScript 3 (Optional)	
Resolution	1200dpi x 1200dpi (Text/Line only), 600dpi x 600dpi	
Memory	2GB (Uses Main unit RAM)	
Hard Disk	Standard 80GB (Available Disk Space: 10GB) Maximum 1TB (Available Disk Space: 675GB)	
CPU	Canon Custom Processor, 1.2GHz (Uses Main unit CPU)	
PS Fonts	Roman 136	
PCL Fonts	Roman93, Bitmap10, OCR2	
Supported OS	PCL Windows 2000/XP/Server2003/Vista/Server2008/Win7 Adobe PostScript 3 Windows 2000/XP/Server2003/Vista/Server2008/Win7, Mac OS X (10.4.9 or later)	
UFR II	Windows 2000/XP/Server2003/Vista/Server2008/Win7/Linux, Mac OS X (10.4.9 or later)	
Mac-PPD	Mac OS 9.1 or later, Mac OS X (10.2.8 or later)	
Interface	Ethernet (1000Base-T/100Base-TX/10Base-T), Wireless LAN (IEEE802.11b/g, Optional), USB2.0	
Network Protocol	TCP/IP (LPD/Port9100/WSD/IPP/SMB/FTP), IPV6, IPX/SPX (NDS, Bindery), AppleTalk	
Pull Scan	Network TWAIN Driver (75 to 600dpi 24bit color/8bit grayscale/2bit Black & White)	
Optional Accessories		
imagePASS-A1		
PDL	PCL5c/6, Adobe PostScript 3	
Resolution	1200dpi x 1200dpi, 600dpi x 600dpi	
Memory	512MB+512MB (Option)	
Hard Disk	80GB	
CPU	Intel Celeron-M M440 1.86GHz	
PS Fonts	136 Adobe PS Fonts	
PCL Fonts	80 Agfa fonts	
Supported OS	Windows 2000/XP/Server2003/Server2008/Vista/Vista SP1, Mac OS X 10.3.9 or later	
Interface	Ethernet 1000Base-T/100Base-TX/10Base-T, USB	
Network Protocol	TCP/IP (LPD/Port9100/IPP/SMB/FTP), Apple Talk	
ColorPASS-GX300		
PDL	Adobe PostScript 3	
Resolution	1200dpi x 1200dpi, 600dpi x 600dpi	
Memory	2GB	
Hard Disk	160GB	
CPU	Intel Core2 Duo Xeon E8400 2x3.0GHz	
PS Fonts	136 Adobe PS Fonts	
PCL Fonts	N/A	
Supported OS	Windows 2000/XP/Server2003/Server2008/Vista/Vista SP1, Mac OS X 10.3.9 or later	
Interface	Ethernet 1000Base-T/100Base-TX/10Base-T, USB, D-sub 15-pin connector	
Send Specification (Standard)		
Scan Speed (A4, 300dpi)	120ipm (Color/B&W), 200ipm (B&W)/140ipm (Color) with optional 1PDS	
Scan Resolution	100dpi, 150dpi, 200 x 100dpi, 200dpi, 200 x 400dpi, 300dpi, 400dpi, 600dpi	
Destinations	E-Mail/Internet FAX (SMTP), PC (SMB, FTP), iWDM, WebDAV	
Address Book	LDAP, Local (Max.1800)	
File Format	TIFF, JPEG, PDF, XPS, High compression PDF/XPS, PDF/A-1b, Optimize PDF for Web	

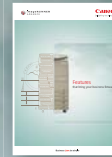
Universal Send Security		
Feature Set-D1		
File Format	Encrypted PDF, Device Signature PDF/XPS	
Optional Image Readers		
Duplex Color Image Reader Unit-A1 (1PDS)		
Paper Size	A3, A4, A4R, A5, A5R	
Paper Weight	Single Sided Original	38 to 220gsm
	Double Sided Original	50 to 220gsm
Max. Number of Originals	300 sheets (80gsm)	
Document Scanning Speed (max.)	Copy (Single Side)	A4 120ipm 600dpi (B&W), 70ipm 600dpi (Color)
	Scan (Single Side)	A4 120ipm 300dpi (Color/B&W)
	Copy (Double Side)	A4 120ipm 600dpi (B&W), 70ipm 600dpi (Color)
	Scan (Double Side)	A4 200ipm 300dpi (B&W), 140ipm 300dpi (Color)
Dimensions (W x D x H)	635 x 590 x 262mm	
Weight	Approx. 38.9kg	
Paper Deck Unit-A1		
Paper Size	A4	
Paper Weight	52 to 220gsm	
Paper Capacity	3,500 sheets (80gsm)	
Dimensions (W x D x H)	323 x 583 x 570mm	
Weight	Approx. 37kg	
POD Deck Lite-A1		
Paper Size	A3, A4, A4R, SRA3, 330 x 489mm	
Paper Weight	52 to 300gsm	
Paper Capacity	3,500 sheets (80gsm)	
Dimensions (W x D x H)	601 x 621 x 570mm	
Weight	Approx. 50 kg	
Staple Finisher/Booklet Finisher-B1		
Number of Trays	3 trays	
Tray Capacity (Non Collate)	Tray A: A4/A5R 250 sheets, A3/A4R/SRA3/330 x 489mm	125 sheets
	Tray B: A4/A5R 1,300 sheets, A3/A4R/SRA3/330 x 489mm	650 sheets
	Tray C: A4 2,450 sheets, A5R 1,700 sheets, A3/A4R/SRA3/330 x 489mm	650 sheets
Staple Position	Corner, Double, Booklet Stitch (Booklet Finisher only)	
Staple Capacity (64-81g/m ²)	A4: 50 sheets	
	A3/A4R: 30 sheets	
Booklet Stitch Specifications (Booklet Finisher only)	Paper Size: A3, A4R Staple Capacity: 16 sheets (64 pages, 64-81gsm) Paper Weight: 64 to 105gsm	
Dimensions (W x D x H)	Staple Finisher	748 x 656 x 1121mm
	Booklet Finisher	748 x 656 x 1121mm
Weight	Staple Finisher	Approx. 48kg
	Booklet Finisher	Approx. 70.5kg
Document Insertion/Folding		
Unit G1		
C-Fold	Paper Size	A4R
	Paper Weight	64 to 105gsm
Z-Fold	Paper Size	A3, A4R
	Paper Weight	64 to 105gsm
Output Capacity of C-Fold	40 sheets	
Document Insertion Unit	Size	A3, A4, A4R, SRA3, 330 x 489mm
	Weight	789 x 646 x 1097mm
	Capacity	100 sheets (80gsm)
Dimensions (W x D x H)	662 x 679 x 1242mm	
Weight	Approx. 76kg	
Other Optional Accessories		
Booklet Finisher-A1, Buffer Pass Unit-F1, Card Reader-C1, Color Image Reader Unit-A1, Copy Card Reader Attachment-A1, Copy Tray-P1, Document Insertion Unit-H1, Document Insertion Unit-J1, External 2 Hole Puncher-A1, External 2/3 Hole Puncher-A1, Inner Booklet Trimmer-A1, Multi-drawer Paper Deck-A1, Paper Deck Double Feeding Detection Kit-A1, Paper Folding Unit-G1, Printer Cover-B1, Professional Puncher-C1, Professional Puncher Integration Unit-B1, Puncher Unit-BF1, Puncher Unit-BG1, Staple Finisher-A1, Utility Tray-A1, Paper Deck Heater Unit-A1, Reader Heater Unit-G1, Barcode Printing Kit-D1, Direct Print Kit (for PDF)-H1, Direct Print Kit (for XPS)-H1, Encrypted Printing Software-D1, Expansion Bus-F1, IPsec Board-B2, PCL Printer Kit-AD1, PS Printer Kit-AD1, Remote Fax Kit-A1, Super G3 2nd Line Fax Board-AD1, Super G3 3rd/4th Line Fax Board-AE1, Super G3 FAX Board-AD1, Universal Send Advanced Feature Set-D1, Universal Send Digital User Signature Kit-C1, Web Access Software-H1, Wireless LAN Board-B1, 3.5inch/1TB HDD-B1, 3.5inch/80GB HDD-A1, Access Management System Kit-B1, Additional Memory Type B (512MB), Copy Control Interface Kit-A1, Data Erase Kit-C1, Document Scan Lock Kit-A1, HDD Data Encryption & Mirroring Kit-C1, HDD Mirroring Kit-D1, Key Switch Unit-B1, Multimedia Reader/Writer-A1, Removable HDD Kit-AB1, Secure Watermark-B1, Serial Interface Kit-K1, USB Device Port-A1, 512MB Option Memory, COMPOSE1, V2.0, GA FEATURE SET V.2.2, Graphic Arts Package, Premium Edition V.2.2, GUI KIT-A1, GUI KIT-B1, IMPOSE V2.7 Roman x 1, IMPOSE V2.7 Roman x 3, IMPOSE V2.7 Roman x 7, Removable HDD Kit-B1, SECURE ERASE V1.1, ADF Access Handle-A1, Control Panel Sheet-A1, Remote Operators Software Kit-B1, Upright Control Panel-A1, Voice Guidance Kit-F1, Voice Operation Kit-C1		

This brochure and the specifications of the product have been developed prior to the date of product launch. These specifications are subject to change without notice. Therefore no representations or warranties, either express or implied, are made of the fitness of this product for a particular purpose. In no circumstances shall the information in this brochure be considered part of our terms and conditions of sale. You are advised to check the prevailing specification immediately prior to purchase. All company and/or product names are trademarks and/or registered trademarks of their respective manufacturers in their markets and/or countries.

To experience the power and simplicity of an imageRUNNER ADVANCE, speak with one of our Canon representatives today. It's that simple.



Integrated Solutions



iR ADVANCE Features



Cloud Computing

To integrate more capabilities into your imageRUNNER ADVANCE device, simply speak with your friendly Canon representative.



Delighting You Always

SOUTH & SOUTHEAST ASIA REGIONAL HEADQUARTERS

Canon Singapore Pte. Ltd.
1 HarbourFront Avenue #04-01, Keppel Bay Tower, Singapore 098632
Tel: +65-6799 8888 | Fax: +65-6799 8882

www.canon-asia.com
www.canon.com.sg

CANON SALES SUBSIDIARIES & BUSINESS PARTNERS

Afghanistan:

Megaplus Afghanistan Limited
House No. 233, Street No. 4, Charagh Ali,
Qilla-e-Fatehullah, Kabul, Afghanistan
Tel: 93-700 228 832 / 93-700 979 511
Fax: 93-202 201 259
Email: info@megaplus.com.af

Bangladesh:

Flora Limited
Adamjee Court Annex-2 (4th Floor)
119-120 Motijheel Commercial Area
Dhaka 1000 Bangladesh
Tel: 880-2-716-2742-46 / 225
Fax: 880-2-955-0030
www.floralimited.com

Brunei:

Interhouse Company
No. 5-7 Bunut Jaya Complex
Spq 574 Jalan Tutong BF1320
P.O. Box 423, Seri Complex
Bandar Seri Begawan BA 1779
Brunei Darussalam
Tel: 673-2-653-001
Fax: 673-2-653-003

Cambodia:

Royal Cambodia Co., Ltd
#437 Preah Monivong Blvd
Phnom Penh
Kingdom of Cambodia
Tel: 855-23-428955
Fax: 855-23-722961

Hong Kong:

Canon Hongkong Co. Ltd
19F, The Metropolis Tower
10 Metropolis Drive
Hunghom, Hong Kong
Tel: 852-3191-2388
Fax: 852-2369-3800
www.canon.com.hk

India:

Canon India Private Limited
7th Floor, Tower B, Building #5
DLF Cyber Terraces, DLF Phase-3
Gurgaon - 122002
Haryana, India
Tel: 91-124-416 0000
Fax: 91-124-416 0011
www.canon.co.in

Indonesia:

PT Samafitro
Jalan Ir. H Juanda No.8
Jakarta 10120, Indonesia
Tel: 62-21-345 8989
Fax: 62-21-345 6699
www.samafitro.co.id

Malaysia:

Canon Marketing (Malaysia) Sdn Bhd
Block D, Peremba Square
Saujana Resort Section U2,
40150 Shah Alam
Selangor Darul Ehsan, Malaysia
Tel: 60-3-7844 6000 / 7845 0055
Fax: 60-3-7844 6196 / 6198
www.canon.com.my

Maldives:

Simdi Company Pvt Ltd.
G.Manaam Building,
2/1 Neeloafaru Magu,
Male' 20-129, Maldives
Tel: 960-333 4421
Fax: 960-333 4424

Myanmar:

Myanmar Golden Rock International Co., Ltd
Level 6, FJV Commercial Centre
No: 422-426, Strand Road
Botataung Township
Yangon, Myanmar
Tel: 95-1-202092 to 96
Fax: 95-1-202079
Email: sales@mgr.com.mm

Nepal:

International Electronics Concern (P) Ltd
Kha 14, 1st Floor
Haratibhawan Putalisadak
Ramshah Path, Kathmandu, Nepal
P.O. Box 12588
Tel: 977-1-442 1991
Fax: 977-1-442 1909

Pakistan:

Shirazi Trading Company (Pvt.) Ltd
8th Floor, Adamjee House
I.I. Chundrigar Road
Karachi 74000 Pakistan
Tel: 92-21-3241 (7659), (7737) or (7746)
Fax: 92-21-(3241 7747), (3242 0417) or
(3242 0418)
www.shirazitrading.com.pk

Philippines:

Canon Marketing (Philippines), Inc.
Ground Floor Commerce and Industry Plaza.
Campus Ave. Cor. Park Ave., McKinley Hill
Fort Bonifacio, Taguig City
Tel: 632-884-9000
Fax: 632-556-1456
www.canon.com.ph

Sri Lanka:

Metropolitan Office (Pvt) Ltd
12, Magazine Road Colombo 08
Sri Lanka
Tel: 94-11-470 0200
Fax: 94-11-470 0267

Thailand:

Canon Marketing (Thailand) Co. Ltd
10th Floor Bangkok City Tower
179/34-45 South Sathorn Road
Bangkok 10120
Tel: 66-2-344 9999
Fax: 66-2-344 9960
www.canon.co.th

Vietnam:

Canon Singapore Pte Ltd
Ho Chi Minh City Representative Office
Floor 6, Saigon Centre Building
65 Le Loi, Ben Nghe Ward, District 1
Ho Chi Minh City, Vietnam
Tel: 848-3820 0466
Fax: 848-3820 0477

Canon Singapore Pte Ltd
Hanoi Representative Office
CharmVit Building, 11th Floor
117 Tran Duy Hung, Cau Giay District
Hanoi, Vietnam
Tel: 844-3771 1677
Fax: 844-3771 1678
www.canon.com.vn



MALAYSIA SDN BHD
YOUR BUSINESS PARTNER

03 6140 4688 / 6141 4688
Hotline: 1700 81 4588
www.thecopier.com.my

This document is for information purpose only. The contents are subject to change without notice. Product options, name and availability may vary by regions. We expressly disclaim any liability or contractual obligations with respect to this document.

Canon, imageRUNNER, imageRUNNER ADVANCE, imageCHIP, RAPID Fusing System, MEAP, eMaintenance, Business can be simple and get Smart get genuine are trademarks of Canon Inc. and/or its affiliates. Other names may be the trademarks of their respective owners.

uniFLOW is an independent party software distributed by Canon Singapore Pte. Ltd.

0154W928 © 2011 Canon Singapore Pte. Ltd.
All rights reserved. Printed in Singapore.