

Advanced Scanning

Advanced Cloud Computing

Advanced Integration To Enterprise Systems

Advanced Adobe Integrations

Advanced Storage

Advanced Authentication

Advanced Color Quality

F44

F43

F42

F41

**Advanced** made simple for you.

MORE  
**POWERFUL.**  
YET **SIMPLER** THAN EVER.

That's the way your business communications should be. Direct, intuitive, and most of all, user-centric. This is why we have built the next generation of multifunctional devices: the **imageRUNNER ADVANCE C5000 series**.

We believe that documents can be printed in an easier, faster, better, safer and greener way. Being advanced is about continually improving every possible facet so we get maximum efficiency.

Imagine a printer that does its part to reduce waste while raising productivity. A machine smart enough to remember individual preferences and increase output without compromising on quality. A multifunctional device capable of accessing the world of Cloud computing – while simplifying business processes.

This is the new **imageRUNNER ADVANCE C5000 series**.

The **imageRUNNER ADVANCE C5000 series** has been designed from the onset to offer you the following:



Find out how we have made Advanced technologies work simpler for you.



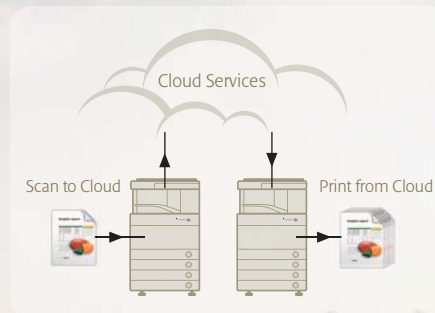
imageRUNNER ADVANCE  
TECHNOLOGY REACHES

# NEW HEIGHTS

Cloud computing is gaining acceptance with more and more companies across the globe. Businesses today look to Cloud computing for on-demand scalability. Costly infrastructure, setups and administrative burden are a thing of the past with proper implementation of Cloud Computing technology.

Canon's imageRUNNER ADVANCE maximizes office productivity by allowing users to access Cloud services right from imageRUNNER ADVANCE devices. Users can scan and store their paper documents, or choose to retrieve and print their documents stored in their Cloud service.

Scan-to-Cloud and Print-from-Cloud is simple with Canon's imageRUNNER ADVANCE - all that is needed is an imageRUNNER ADVANCE multifunctional device (MFD); no drivers, additional software or personal computers are required. With the Cloud Scan and Cloud Print support of Google™ Docs and Microsoft™ SharePoint Online, imageRUNNER ADVANCE systems are the perfect way to scan and print through Cloud services.



#### Important Note:

- \* Machine upgrades may be required to support Google™ Docs and Microsoft™ SharePoint Online Cloud services via the imageRUNNER ADVANCE devices. Internet connectivity is required.
- \*\* Users of Google™ Docs and Microsoft™ SharePoint Online Cloud services are advised to evaluate the benefits and risks of Cloud services and their data security needs.
- \*\*\* Availability of the Google™ Docs and Microsoft™ SharePoint Online Cloud services on the imageRUNNER ADVANCE devices varies by country or region. For more information, please contact your local Canon Sales Office.



# ADVANCED USABILITY AND CONVENIENCE

Meet the multifunctional device that is optimized for convenience and speed - your way.



## Intuitive User Interface

The new imageRUNNER ADVANCE C5000 interface provides you with a more pleasant navigation experience on an 8.4" full color, high-resolution TFT touchscreen.



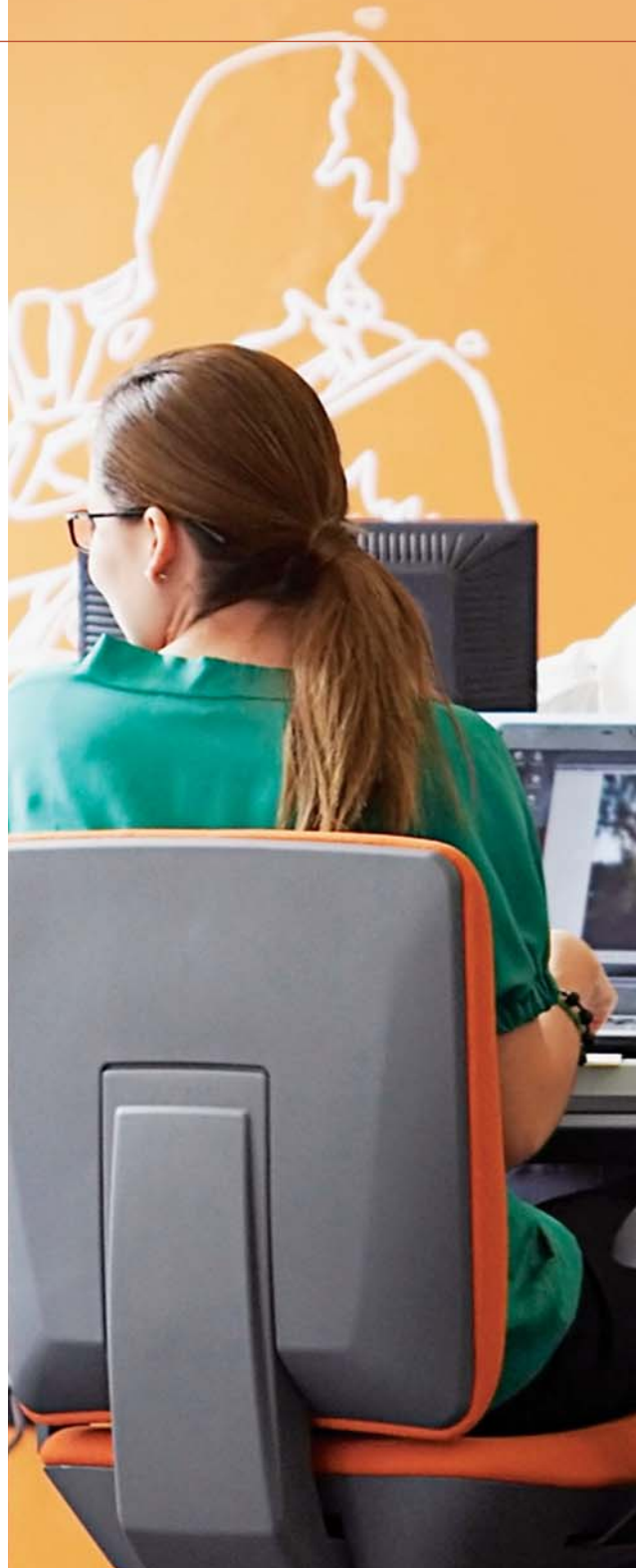
## Configurable Quick Menu

Complex, frequently used settings can be easily configured to run at the touch of a button. This streamlines every individual's workflow, and increases productivity by letting you accomplish more in less time.



## Customizable Menu

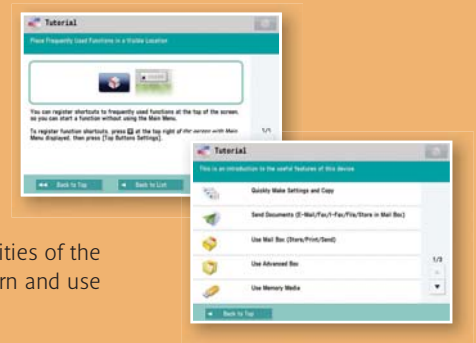
The size, the number of icons, and even the wallpaper displayed on the menu can be changed to suit individual or workflow needs and preferences.



The Canon imageRUNNER ADVANCED C5000 series is simply *simpler* to use.

#### Step-by-step Tutorial

The inbuilt onscreen tutorial helps you explore the full capabilities of the imageRUNNER ADVANCE C5000 series, and enables you to learn and use more advanced functions with ease.



#### Plug and Print Capability

With standard USB input and optional media connectivity options such as Secure Digital (SD) or CompactFlash (CF) Cards, you can walk up to any imageRUNNER ADVANCE C5000 series with your thumbdrive or memory card to scan and print on the spot.



#### Innovative Toner System

To maintain the ongoing productivity of your business, the imageRUNNER ADVANCE C5000 series features a toner system that can be replaced - even when your device is delivering printouts.



#### Hassle-free Paper Loading

With an in-built auto paper sensor, the imageRUNNER ADVANCE C5000 series is intelligent enough to detect paper sizes accurately. This reduces paper jams and misfeeds, translating to higher productivity.

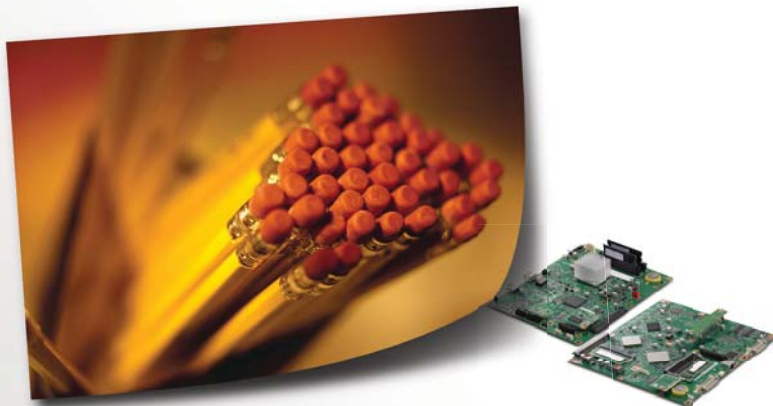


# ADVANCED PRINT QUALITY

Quality prints that truly shine.

## ADVANCED imageCHIP System Architecture

To meet and exceed the demands of today's businesses, Canon has developed a dual processor system. The image processor board works with the scanner, adjust images, and ensures superior image quality and ultra-fast processing. The information processor boards controls user interface and coordinates device networking and connectivity. The result is higher quality printouts with lesser wait.



## High Resolution Brilliant Printouts

Combine the E-Drum imagePRESS technology with a 1200x1200 dpi printing resolution, and you will get sharp and vivid printouts, image consistency and high speed printing. Add to that the pQ Toner and an intelligent controller, and the imageRUNNER ADVANCE C5000 series truly brings you the crispest, most vibrant color printouts.



## Genuine Adobe PostScript 3

The imageRUNNER ADVANCED C5000 series supports Genuine Adobe PostScript 3 printing capability, enabling you to deliver the desired output quality without worrying about font compatibility. True PostScript capability means that you will work seamlessly with PostScript workflows to achieve faster and higher quality prints compared to emulations. You will also enjoy improved office productivity with direct PDF printing and full support of Adobe fonts. In addition, Genuine Adobe PostScript 3 also supports the Pantone Color System, which is essential in the creative and publishing industries.

## Fiery Print Controllers

For jobs that demand an exceptionally high level of productivity and advanced color management workflow control, Canon provides powerful Fiery print controller options - imagePASS-B1 and ColorPASS-GX300 (only for iR-ADV C5051). Both controllers are Variable Data Printing (VDP) ready and support a variety of VDP languages.





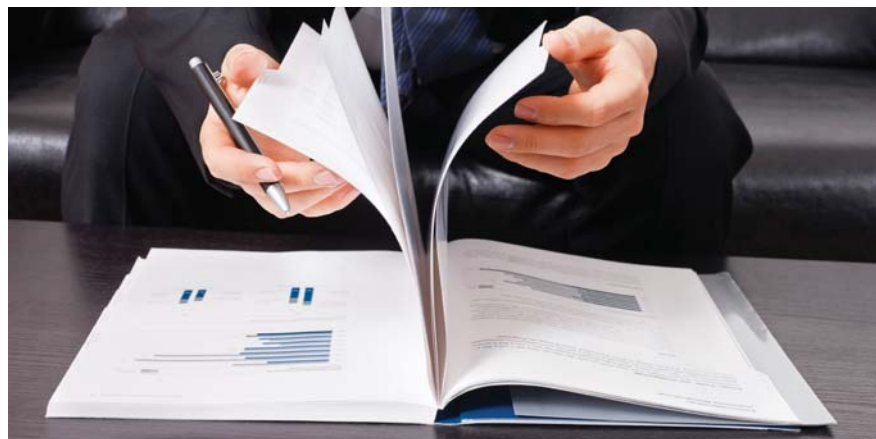
# ADVANCED PRODUCTIVITY



Advanced technology becomes simple with the Canon imageRUNNER ADVANCE. Simply add the modular units you need to further extend the functions of your device.

## Professional Looking Documents

With Canon's optional accessories, it is easy to impress and inspire with professional-grade reports and presentations. Simply select the settings you want, ranging from automatic stapling, punching, collating and even booklet creation functions. For a compact footprint, internal stapling and collating units are also available as options.



## High Speed Scanning

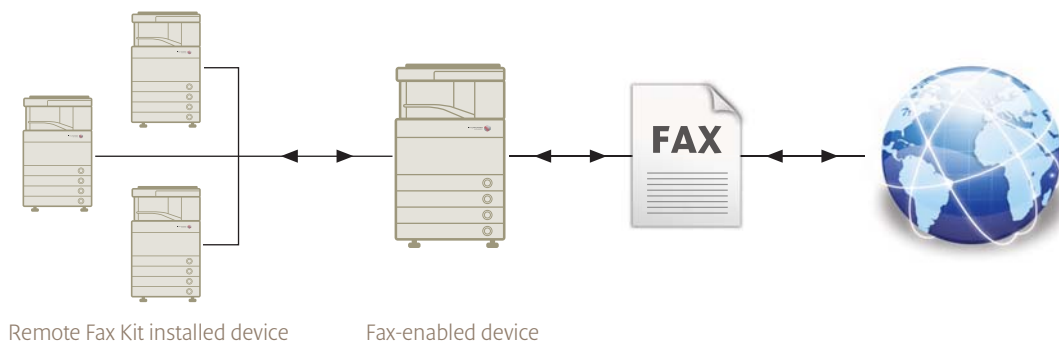
Canon's revolutionary Duplex Color Image Reader features a proprietary image sensor. This allows you to create 100 to 150 crystal-clear reproductions of black & white and color documents each time you press the button.

## 4-Line Fax

The imageRUNNER ADVANCE C5000 series supports optional Super G3 fax functionality for high-speed fax transactions. The 4-line fax feature is capable of handling large volumes of fax documents, while ensuring lesser busy signals and greater connectivity. You can also save cost and space by consolidating multiple fax devices into one shared device.

## Remote Fax Collaboration

With the optional Remote Fax Kit, you can also fax through other fax-capable imageRUNNER ADVANCE devices in the network, even if the one you are using does not have a fax-board installed. This translates to significant cost-savings and convenience.



# ADVANCED DOCUMENT WORKFLOW

A healthy document workflow means a healthy business. With imageRUNNER ADVANCE C5000 series, you will find the most advanced, yet simple workflow.



## Scan and Send

In one simple operation, you can distribute scanned documents to multiple destinations, such as email, fax destinations and network folders. The wide range of formats include standard High Compression PDF, Adobe PDF Reader Extensions, Searchable PDF, Encrypted PDF, XPS, and even the latest Office Open XML.

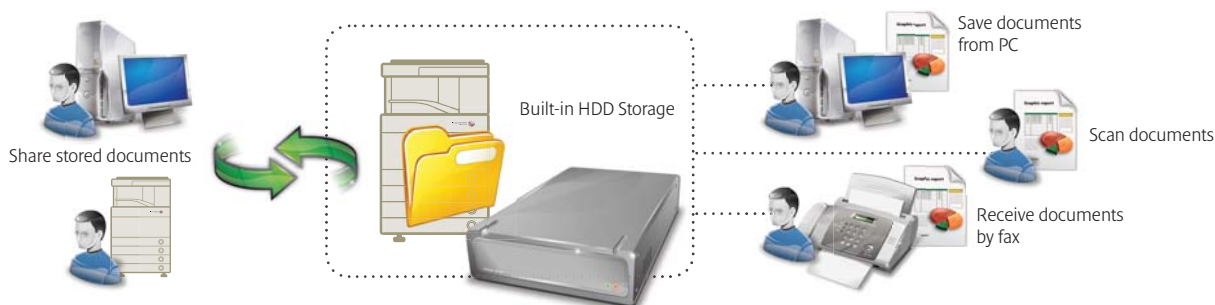


## Adobe Reader Extensions

Enjoy Adobe Reader functionality without the extra cost of additional software licenses. With its inherent Adobe Reader Extensions PDF capability, you can share and review documents electronically - free-of-charge.

## Advanced Box

Canon's new built-in document sharing solution simply makes sense. Multiple users can collaborate easily on a shared folder and access files from PCs or other networked imageRUNNER ADVANCE systems. Personal folders are also available for more sensitive documents. What's more, you can also preview the documents before printing them.



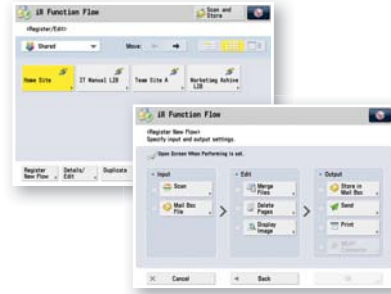


### iW Function Flow

iW Function Flow is an imageRUNNER ADVANCE series core MEAP application that can transform time-consuming, multiple step tasks into simple workflows for each user. Scanning, e-mailing, faxing, and archiving can be done in one operation, all from a single button on the device control panel. The imageRUNNER ADVANCE series supports a new version of Function Flow that supports MEAP Connectors.

### MEAP Connectors

MEAP Connectors bridge your Canon imageRUNNER ADVANCE and enable document transmission to external systems. The software development kit (MEAP SDK) also enables third party vendors to develop systems based on your requirements. You can even create your own workflow tasks using the MEAP Connector using the PC-based Function Flow Editor tool.



### Adobe LiveCycle® Rights Management

You can create a Policy Protected PDF document from the device by integrating it to the Adobe LiveCycle® Rights Management ES Server. When opened, a protected PDF file will contact the server to authenticate and update itself. What this does is to ensure that no unauthorized users will be able to open it, and that the latest updated version is always shown when opening the file.

**ADOBE® LIVECYCLE® RIGHTS MANAGEMENT ES**



# ADVANCED MANAGEMENT

Be in control, wherever you are. The imageRUNNER ADVANCE makes it easy to monitor and optimize your company's output.

### Centralized Remote Control

Using the Remote User Interface, your IT managers and system administrators will be able to control and manage output devices without having to travel to each machine to check or update their status.

### eMaintenance

Take control of your Canon devices while reducing administration burdens with eMaintenance. With less downtime and easy maintenance, you will have more uptime — and greater productivity.

*\* eMaintenance works with most Canon copiers, printers and multifunctional devices. For more information on what models are supported, please contact Canon.*

# ADVANCED SECURITY

Safeguard your business' sensitive documents without compromising on quality or speed.

**Card Authentication** controls access of devices in the office to authorized users with the use of optional ID cards.

**Document Scan Lock** embeds hidden tracking information in a document to restrict unauthorized copying or scanning, and track the origin.

**Department ID** restricts machine usage to those users with a valid ID and password.

**Access Management System** allows restriction of various features of copy, print, fax, scan, Mail Box by user, group or job function. You can even limit access for specific functions such as Color Copying.

**HDD Encryption and Erase** encrypts information before it is written to the hard drive, and permanently removes it by overwriting when the job is complete.

**iEEE2600 Standard Conformity** meets the industry requirements for hardcopy security in medical, finance, and other office environments.

**Removable HDD Option** enables hard disk drive to be removed and placed in a secure location when not in use.



# ADVANCED

# RESPONSIBILITY

Much of the above features are geared towards efficiency and waste reduction. At Canon, we believe in doing our part for the environment.

**Higher efficiency for lower emissions.** Through the Life Cycle Assessment (LCA) System, Canon has reduced CO<sub>2</sub> emissions by more than 30% over previous models. From manufacturing to energy use and even transportation, every aspect is optimized for efficiency.

imageRUNNER ADVANCE uses 100% recycled plastic in certain parts of machine. In addition, we subject ourselves to the most stringent standards, restricting the use of 24 hazardous substances (where EU RoHS directives restrict only six).

**Changing our behavior to change our environment.** By encouraging digital previews, we reduce unnecessary prints and reduce mistakes. Administrators can also help encourage use of duplex settings and control color usage easily.

**The imageRUNNER ADVANCE consists of green technologies.** Our pQ toner lowers energy consumption by minimizing heat and power requirements. Our RAPID fusing technology saves 75% more power usage than previous models. In Sleep Mode, power consumption is at a low 1.5W, or less. Even when a USB card reader is installed, the machine is able to go to deep sleep to save energy. The list goes on.

# IT'S SIMPLE TO ADVANCE YOUR BUSINESS.

With a Canon imageRUNNER ADVANCE C5000 series multifunctional device, you will see a significant advancement in the way your business communication is performed.

So move your business forward. Make it faster, smoother, and safer with an imageRUNNER ADVANCE.

To arrange for a demonstration, simply contact any of our sales staff in the relevant contact overleaf. It's that simple.

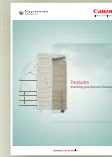
## SPECIFICATIONS imageRUNNER ADVANCE C5000 Series

Type	Desktop	
Maximum Original Size	A3	
Copy Sizes	Cassette	305 x 457mm, A3, A4, A4R, A5R Custom Size 139.7 x 182mm to 304.8 x 457.2mm Optional Envelope Feeder, COM10 No.10, Monarch, DL, ISO-B5, ISO-C5
	Stack Bypass	A5R - SRA3 (320 x 450mm), Envelopes Custom Size 99 x 140mm to 320 x 457mm
Resolution	Reading	600dpi x 600dpi
	Copying	600dpi x 600dpi
	Printing	1200dpi x 1200dpi (text/line only)
Copy/Print Speed	A4	C5051: 51ppm (B&W/Color)
		C5045: 45ppm (B&W/Color)
		C5035: 35ppm (B&W/Color)
	A3	C5030: 30ppm (B&W/Color)
		C5051: 26ppm (B&W/Color)
		C5045: 26ppm (B&W/Color) C5035: 18ppm (B&W/Color) C5030: 18ppm (B&W/Color)
Magnification	Zoom 25-400%	
First Copy Time	Black-and-White	4.0sec (51/45ppm model), 5.5sec (35/30ppm model)
	Full Color	6.5sec (51/45ppm model), 8.9sec (35/30ppm model)
Warm-Up Time	38 seconds	
Multiple Copies/Prints	1 to 999 sheets	
Duplexing	Standard automatic stackless	
Paper Weight	Cassette	52 to 209gsm
	Stack Bypass	52 to 256gsm
	Duplex	52 to 209gsm
Paper Capacity	Standard	550 sheets x2 cassettes (80gsm) Stack Bypass: 100 sheets (80gsm)
	Optional	550 sheets x2 cassettes (80gsm)
	Paper Deck	2,700 sheets (80gsm)
	Total capacity	5,000 sheets
CPU	1.2GHz	
Memory	Standard: 2GB RAM Maximum: 2.5GB RAM	
Hard Disk Drive	Standard 80GB (Available Disk Space: 10GB) Maximum 250GB (Available Disk Space: 115GB)	
Interface	Ethernet (1000Base-T/100Base-TX/10Base-T) Wireless LAN (IEEE802.11b/g, Optional), USB2.0	
Power Supply	220-240V AC, 50/60Hz	
Power Consumption	1.8kW max (51/45ppm), 1.3kW max (35/30ppm)	
Dimensions (WxDxH)	620 x 760 x 982mm (with 1PDS) / 1230mm (with 1PDS & CFU)	
	620 x 735 x 938mm (with DADF) / 1186mm (with DADF & CFU)	
	620 x 735 x 826mm (with Platen cover) / 1074mm (with Platen cover & CFU)	
Weight	Approx. 170kg (with 1PDS)	
	Approx. 153kg (with DADF)	
<b>Print Specification</b>		
PDL	UFR II (Standard), PCL 5c/6 (Optional), Adobe PostScript 3 (Optional)	
Resolution	1200dpi x 1200dpi (Text/Line only), 600dpi x 600dpi	
Memory	2GB (Uses Main unit RAM)	
Hard Disk	Standard 80GB (Available Disk Space: 10GB) Maximum 250GB (Available Disk Space: 115GB)	
CPU	Canon Custom Processor, 1.2GHz (Uses Main unit CPU)	
PS Fonts	Roman 136	
PCL Fonts	Roman93, Bitmap10, OCR2	
Supported OS	PCL Windows 2000/XP/Server2003/Vista/Server2008/Win7 Adobe PostScript 3 Windows 2000/XP/Server2003/Vista/Server2008/Win7, Mac OSX (10.4.9 or later)	
UFR II	Windows 2000/XP/Server2003/Vista/Server2008/Win7/Linux, Mac OSX (10.4.9 or later)	
Mac-PPD	Mac OS 9.1 or later, Mac OS X (10.2.8 or later)	
Interface	Ethernet (1000Base-T/100Base-TX/10Base-T) Wireless LAN (IEEE802.11b/g, Optional), USB2.0	
Network Protocol	TCP/IP (LPD/Port9100/WSD/IPP/PPS/SMB/FTP), IPv6, IPX/SPX (NDS, Bindery), AppleTalk	
Pull Scan	Network TWAIN Driver (75 to 600dpi 24bit color/8bit grayscale/2bit Black & White)	
<b>Optional Accessories</b>		
<b>imagePASS-B1</b>		
PDL	PCL5c/6, Adobe PostScript 3	
Resolution	1200dpi x 1200dpi, 600dpi x 600dpi	
Memory	512MB+512MB (Option)	
Hard Disk	80GB	
CPU	Intel Celeron-M M440 1.86GHz	
PS Fonts	136 Adobe PS Fonts	
PCL Fonts	80 Agfa fonts	
Supported OS	Windows 2000/XP/Server2003/Server2008/Vista/Vista SP1, Mac OS X 10.3.9 or later	
Interface	Ethernet 1000Base-T/100Base-TX/10Base-T, USB	
Network Protocol	TCP/IP (LPD/Port9100/IPP/SMB/FTP), Apple Talk	
<b>ColorPASS-GX300 (Optional for C5051)</b>		
PDL	Adobe PostScript 3	
Resolution	1200dpi x 1200dpi, 600dpi x 600dpi	
Memory	2GB	
Hard Disk	160GB	
CPU	Intel Core2 Duo Xeon E8400 2x3.0GHz	
PS Fonts	136 Adobe PS Fonts	
PCL Fonts	N/A	
Supported OS	Windows 2000/XP/Server2003/Server2008/Vista/Vista SP1, Mac OS X 10.3.9 or later	
Interface	Ethernet 1000Base-T/100Base-TX/10Base-T, USB, D-sub 15-pin connector	
Network Protocol	TCP/IP (LPD/Port9100/IPP/SMB/FTP), Apple Talk	

<b>Send Specification (Standard)</b>		
Scan Speed (A4, 300dpi)	70ipm (Color/B&W), 100ipm for Duplex scan by optional 1 PDS	
Scan Resolution	100dpi, 150dpi, 200 x 100dpi, 200dpi, 200 x 400dpi, 300dpi, 400dpi, 600dpi	
Destinations	E-Mail/Internet FAX (SMTP), PC (SMB, FTP), iWDM, WebDAV	
Address Book	LDAP, Local (Max.1800)	
File Format	TIFF, JPEG, PDF, XPS, High compression PDF/XPS, PDF/A-1b, Optimize PDF for Web	
<b>Universal Send Advanced Feature Set-D1</b>		
File Format	Outline PDF (Trace & Smooth), Searchable PDF/XPS, Reader Extensions PDF, Office Open XML	
<b>Universal Send Security Feature Set-D1</b>		
File Format	Encrypted PDF, Device Signature PDF/XPS	
<b>Optional Image Readers</b>		
<b>Color Image Reader Unit-B1 (2-sided Double pass ADF) / Duplex Color Image Reader Unit-B1 (1PDS)</b>		
Paper Size	A3, A4, A4R, A5, A5R	
Paper Weight	Single sided original	42 to 128gsm
	Double sided original	50 to 128gsm
Max. Number of Originals	100 sheets (80gsm) for 2-sided Double pass ADF	
	150 sheets (80gsm) for 1PDS	
Document Scanning Speed (max.)	2-sided Double pass ADF Copy	A4 46ipm 600dpi (Color/B&W)
	2-sided Double pass ADF Scan	A4 46ipm 300dpi (Color/B&W)
	1PDS Copy	A4 51/70ipm 600dpi (Color/B&W)
	1PDS Scan	A4 70ipm 300dpi (Color/B&W), 100ipm 300dpi for Duplex scan
Dimensions (W x D x H)	2-sided Double pass ADF	620 x 536 x 137mm
	1PDS	618 x 603 x 180mm
Weight	2-sided Double pass ADF	Approx. 8.7kg
	1PDS	Approx. 26.8kg
<b>Cassette Feeding Unit A1</b>		
Type	2 Front-loading adjustable drawers	
Paper Size	305 x 457mm, A3, A4, A4R, A5R Custom Size 139.7 x 182 mm to 304.8 x 457.2 mm	
Paper Weight	52 to 209gsm	
Paper Capacity	550 sheets (80gsm) x 2 cassettes	
Dimensions (W x D x H)	620 x 700 x 251mm	
Weight	Approx. 27.5 kg	
<b>Paper Deck Unit B1</b>		
Paper Size	A4	
Paper Weight	52 to 163gsm	
Paper Capacity	2,700 sheets (80gsm)	
Dimensions (W x D x H)	372 x 603 x 473mm	
Weight	Approx. 37 kg	
<b>Inner Finisher A1</b>		
Number of Trays	One stack tray (Optional 2nd Tray)	
Tray Capacity	A4, A5, A5R	A4-A5R: 500 sheets
	A3, A4R	A3, A4R: 500 sheets
Staple Position	Corner, Double	
Staple Capacity	A4: 50 sheets A3: 30 sheets	
Dimensions (W x D x H)	865 x 540 x 234mm	
Weight	Approx. 11.5kg (Approx.13kg with optional tray)	
<b>Staple Finisher C1 / Booklet Finisher C1</b>		
Number of Trays	2 Trays	
Tray Capacity	A4, A5, A5R	1300 on upper tray, 1700 on lower tray
	A3, A4R	650 on upper tray, 650 on lower tray
Staple Position	Corner, Double, Booklet stitch (Booklet Finisher only)	
Staple Capacity	A4 50 sheets (80gsm) A3, A4R 30 sheets (80gsm)	
Booklet Stitch Specifications (Booklet Finisher only)	Paper Size	305 x 457mm, A3, A4R
	Staple Capacity	1 to 16 sheets (64 pages, 52-81gsm) 1 to 10 sheets (40 pages, 82-105gsm)
Dimensions (W x D x H)	Staple Finisher	677 x 646 x 1097mm
	Booklet Finisher	789 x 646 x 1097mm
	Booklet Finisher	Approx. 46kg
Weight	Booklet Finisher	Approx. 75kg
<b>Other Optional Accessories</b>		
Color Image Reader Unit-B2, Printer Cover-C1, iR Pedestal (New), Inner 2way Tray-F1, Inner Finisher Additional Tray-A1, Buffer Pass Unit-G1, External 2 Hole Puncher-B1, Copy Tray-J1, Utility Tray-A1, Envelope Feeder Attachment-D1, Tab Feeding Attachment Kit-B1, Key Switch Unit-A2, Copy Card Reader Attachment-B1, Card Reader-C1, CST.HEATER UNIT32 200V, Reader Heater Unit-G1, Cassette Heater Unit-37, PCL Printer Kit-AE1, PS Printer Kit-AE1, Barcode Printing Kit-D1, Encrypted Printing Software-D1, Direct Print Kit (for PDF)-H1, Direct Print Kit (for XPS)-H1, Universal Send Digital User Signature Kit-C1, Super G3 FAX Board-AE1, Super G3 2nd Line Fax Board-AE1, Super G3 3rd/4th Line Fax Board-AE1, Remote Fax Kit-A1, Expansion Bus-F1, IPsec Board-B2, Wireless LAN Board-B1, Web Access Software-H1, 2.5inch/80GB HDD-C1, 2.5inch/250GB HDD-D1, Removable HDD Kit-AC1, HDD Mirroring Kit-D1, HDD Data Encryption & Mirroring Kit-C1, Secure Watermark-B1, Data Erase Kit-C1, Additional Memory Type B (512MB), USB Device Port-B1, Multimedia Reader/Writer-A1, Serial Interface Kit-K1, Copy Control Interface Kit-A1, Document Scan Lock Kit-A1, ACCESS MANAGEMENT SYSTEM KIT-B1, 512MB OPTION MEMORY, Removable HDD Kit-B1, Remote Operators Software Kit-B1, ADF Access Handle-A1, Voice Guidance Kit-F1, Voice Operation Kit-C1		
This brochure and the specifications of the product have been developed prior to the date of product launch. These specifications are subject to change without notice. Therefore no representations or warranties, either express or implied, are made of the fitness of this product for a particular purpose. In no circumstances shall the information in this brochure be considered part of our terms and conditions of sale. You are advised to check the prevailing specification immediately prior to purchase. All company and/or product names are trademarks and/or registered trademarks of their respective manufacturers in their markets and/or countries.		



Integrated Solutions



iR ADVANCE Features



Cloud Computing

To integrate more capabilities into your imageRUNNER ADVANCE device, simply speak with your friendly Canon representative.



Delighting You Always

### SOUTH & SOUTHEAST ASIA REGIONAL HEADQUARTERS

Canon Singapore Pte. Ltd.  
1 HarbourFront Avenue #04-01, Keppel Bay Tower, Singapore 098632  
Tel: +65-6799 8888 | Fax: +65-6799 8882

www.canon-asia.com  
www.canon.com.sg

### CANON SALES SUBSIDIARIES & BUSINESS PARTNERS

#### Afghanistan:

Megaplus Afghanistan Limited  
House No. 233, Street No. 4, Charagh Ali,  
Qilla-e-Fatehullah, Kabul, Afghanistan  
Tel: 93-700 228 832 / 93-700 979 511  
Fax: 93-202 201 259  
Email: info@megaplus.com.af

#### Bangladesh:

Flora Limited  
Adamjee Court Annex-2 (4<sup>th</sup> Floor)  
119-120 Motijheel Commercial Area  
Dhaka 1000 Bangladesh  
Tel: 880-2-716-2742-46 / 225  
Fax: 880-2-955-0030  
www.floralimited.com

#### Brunei:

Interhouse Company  
No. 5-7 Bunut Jaya Complex  
Spg 574 Jalan Tutong BF1320  
P.O. Box 423, Seri Complex  
Bandar Seri Begawan BA 1779  
Brunei Darussalam  
Tel: 673-2-653-001  
Fax: 673-2-653-003

#### Cambodia:

Royal Cambodia Co., Ltd  
#437 Preah Monivong Blvd  
Phnom Penh  
Kingdom of Cambodia  
Tel: 855-23-428955  
Fax: 855-23-722961

#### Hong Kong:

Canon Hongkong Co. Ltd  
19F, The Metropolis Tower  
10 Metropolis Drive  
Hung Hom, Hong Kong  
Tel: 852-3191-2388  
Fax: 852-2369-3800  
www.canon.com.hk

#### India:

Canon India Private Limited  
7<sup>th</sup> Floor, Tower B, Building #5  
DLF Cyber Terraces, DLF Phase-3  
Gurgaon - 122002  
Haryana, India  
Tel: 91-124-416 0000  
Fax: 91-124-416 0011  
www.canon.co.in

#### Indonesia:

PT Samafitro  
Jalan Ir. H Juanda No.8  
Jakarta 10120, Indonesia  
Tel: 62-21-345 8989  
Fax: 62-21-345 6699  
www.samafitro.co.id

#### Malaysia:

Canon Marketing (Malaysia) Sdn Bhd  
Block D, Peremba Square  
Saujana Resort Section U2,  
40150 Shah Alam  
Selangor Darul Ehsan, Malaysia  
Tel: 60-3-7844 6000 / 7845 0055  
Fax: 60-3-7844 6196 / 6198  
www.canon.com.my

#### Maldives:

Simdi Company Pvt Ltd.  
G.Manaam Building,  
2/1 Neeloafaru Magu,  
Male' 20-129, Maldives  
Tel: 960-333 4421  
Fax: 960-333 4424

#### Myanmar:

Myanmar Golden Rock International Co., Ltd  
Level 6, FJV Commercial Centre  
No: 422-426, Strand Road  
Botataung Township  
Yangon, Myanmar  
Tel: 95-1-202092 to 96  
Fax: 95-1-202079  
Email: sales@mgr.com.mm

#### Nepal:

International Electronics Concern (P) Ltd  
Kha 14, 1<sup>st</sup> Floor  
Haratibhawan Putalisadak  
Ramshah Path, Kathmandu, Nepal  
P.O. Box 12588  
Tel: 977-1-442 1991  
Fax: 977-1-442 1909

#### Pakistan:

Shirazi Trading Company (Pvt.) Ltd  
8<sup>th</sup> Floor, Adamjee House  
I.I. Chundrigar Road  
Karachi 74000 Pakistan  
Tel: 92-21-3241 (7659), (7737) or (7746)  
Fax: 92-21-(3241 7747), (3242 0417) or  
(3242 0418)  
www.shirazitrading.com.pk

#### Philippines:

Canon Marketing (Philippines), Inc.  
Ground Floor Commerce and Industry Plaza.  
Campus Ave. Cor. Park Ave., McKinley Hill  
Fort Bonifacio, Taguig City  
Tel: 632-884-9000  
Fax: 632-556-1456  
www.canon.com.ph

#### Sri Lanka:

Metropolitan Office (Pvt) Ltd  
12, Magazine Road Colombo 08  
Sri Lanka  
Tel: 94-11-470 0200  
Fax: 94-11-470 0267

#### Thailand:

Canon Marketing (Thailand) Co. Ltd  
10<sup>th</sup> Floor Bangkok City Tower  
179/34-45 South Sathorn Road  
Bangkok 10120  
Tel: 66-2-344 9999  
Fax: 66-2-344 9960  
www.canon.co.th

#### Vietnam:

Canon Singapore Pte Ltd  
Ho Chi Minh City Representative Office  
Floor 6, Saigon Centre Building  
65 Le Loi, Ben Nghe Ward, District 1  
Ho Chi Minh City, Vietnam  
Tel: 848-3820 0466  
Fax: 848-3820 0477  
  
Canon Singapore Pte Ltd  
Hanoi Representative Office  
CharmVit Building, 11<sup>th</sup> Floor  
117 Tran Duy Hung, Cau Giay District  
Hanoi, Vietnam  
Tel: 844-3771 1677  
Fax: 844-3771 1678  
www.canon.com.vn



03 6140 4688 / 6141 4688  
Hotline: 1700 81 4588  
www.thecopier.com.my

This document is for information purpose only. The contents are subject to change without notice. Product options, name and availability may vary by regions. We expressly disclaim any liability or contractual obligations with respect to this document.

Canon, imageRUNNER, imageRUNNER ADVANCE, imageCHIP, RAPID Fusing System, MEAP, eMaintenance, Business can be simple and get Smart get genuine are trademarks of Canon Inc. and/or its affiliates. Other names may be the trademarks of their respective owners.

uniFLOW is an independent party software distributed by Canon Singapore Pte. Ltd.

0154W927 © 2011 Canon Singapore Pte. Ltd.  
All rights reserved. Printed in Singapore.